



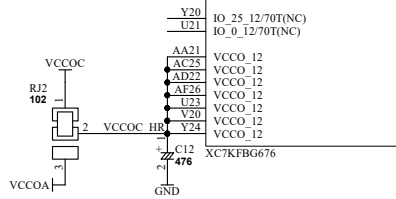




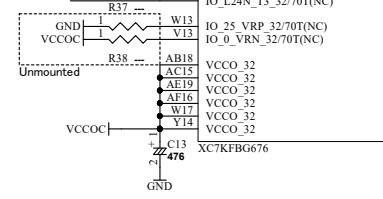
IOC[0..83]	IOCI0..83I
EXCLK C1 P	EXCLK C1 P
EXCLK C1 N	EXCLK C1 N
EXCLK C2 P	EXCLK C2 P
EXCLK C2 N	EXCLK C2 N

FPGA		
IOC42	U22	IO L1P T0 12/70T(NC)
IOC43	V22	IO L1N T0 12/70T(NC)
IOC18	U24	IO L2P T0 12/70T(NC)
IOC19	U25	IO L2N T0 12/70T(NC)
IOC20	V23	IO L3P T0 DQS 12/70T(NC)
IOC21	V24	IO L3N T0 DQS 12/70T(NC)
IOC0	U26	IO L4P T0 12/70T(NC)
IOC1	V26	IO L4N T0 12/70T(NC)
IOC2	W25	IO L5P T0 12/70T(NC)
IOC3	W26	IO L5N T0 12/70T(NC)
	W21	IO L6P T0 12/70T(NC)
	W1	IO L6N T0 VREF 12/70T(NC)
VREFC	AA25	IO L7P T1 12/70T(NC)
IOC26	AA25	IO L7N T1 12/70T(NC)
IOC27	AB25	IO L7N T1 12/70T(NC)
IOC22	W23	IO L8P T1 12/70T(NC)
IOC23	W24	IO L8N T1 12/70T(NC)
IOC6	AB26	IO L9P T1 DQS 12/70T(NC)
IOC7	AC26	IO L9N T1 DQS 12/70T(NC)
IOC4	Y25	IO L10P T1 12/70T(NC)
IOC5	Y26	IO L10N T1 12/70T(NC)
IOC28	AA23	IO L11P T1 SRCC 12/70T(NC)
IOC29	AB24	IO L11N T1 SRCC 12/70T(NC)
IOC36	Y23	IO L12P T1 MRCC 12/70T(NC)
IOC37	AA24	IO L12N T1 MRCC 12/70T(NC)
IOC38	Y22	IO L13P T2 MRCC 12/70T(NC)
IOC39	AA22	IO L13N T2 MRCC 12/70T(NC)
IOC30	AC23	IO L14P T2 SRCC 12/70T(NC)
IOC31	AC24	IO L14N T2 SRCC 12/70T(NC)
IOC24	W20	IO L15P T2 DQS 12/70T(NC)
IOC25	Y21	IO L15N T2 DQS 12/70T(NC)
IOC40	AD23	IO L16P T2 12/70T(NC)
IOC41	AD24	IO L16N T2 12/70T(NC)
IOC32	AB22	IO L17P T2 12/70T(NC)
IOC33	AC22	IO L17N T2 12/70T(NC)
IOC34	AB21	IO L18P T2 12/70T(NC)
IOC35	AC21	IO L18N T2 12/70T(NC)
	AD21	IO L19P T3 12/70T(NC)
	AE21	IO L19N T3 VREF 12/70T(NC)
VREFC	AE24	IO L20P T3 12/70T(NC)
IOC12	AF24	IO L20N T3 12/70T(NC)
IOC13	AF25	IO L20N T3 12/70T(NC)
IOC8	AD26	IO L21P T3 DQS 12/70T(NC)
IOC9	AE26	IO L21N T3 DQS 12/70T(NC)
IOC14	AE23	IO L22P T3 12/70T(NC)
IOC15	AF23	IO L22N T3 12/70T(NC)
IOC10	AD25	IO L23P T3 12/70T(NC)
IOC11	AE25	IO L23N T3 12/70T(NC)
IOC16	AE22	IO L24P T3 12/70T(NC)
IOC17	AF22	IO L24N T3 12/70T(NC)

FPGA		
IOC56	AE17	IO L1P T0 32/70T(NC)
IOC57	AF17	IO L1N T0 32/70T(NC)
IOC58	AE14	IO L2P T0 32/70T(NC)
IOC59	AF15	IO L2N T0 32/70T(NC)
IOC54	AE18	IO L3P T0 DQS 32/70T(NC)
IOC55	AF18	IO L3N T0 DQS 32/70T(NC)
IOC56	AD15	IO L4P T0 32/70T(NC)
IOC67	AE15	IO L4N T0 32/70T(NC)
IOC52	AF19	IO L5P T0 32/70T(NC)
IOC53	AF20	IO L5N T0 32/70T(NC)
	AD16	IO L6P T0 32/70T(NC)
	W1	IO L6N T0 VREF 32/70T(NC)
VREFC	AE16	IO L7P T1 32/70T(NC)
IOC80	AA14	IO L7N T1 32/70T(NC)
IOC81	AA15	IO L7N T1 32/70T(NC)
IOC68	AC14	IO L8P T1 32/70T(NC)
IOC69	AD14	IO L8N T1 32/70T(NC)
IOC76	Y15	IO L9P T1 DQS 32/70T(NC)
IOC77	Y16	IO L9N T1 DQS 32/70T(NC)
IOC78	AB14	IO L10P T1 32/70T(NC)
IOC79	AB15	IO L10N T1 32/70T(NC)
IOC72	AA17	IO L11P T1 SRCC 32/70T(NC)
IOC73	AA18	IO L11N T1 SRCC 32/70T(NC)
	AC16	IO L12P T1 MRCC 32/70T(NC)
EXCLK C1 P	AC16	IO L12N T1 MRCC 32/70T(NC)
EXCLK C1 N	AC18	IO L13P T2 MRCC 32/70T(NC)
EXCLK C2 P	AC18	IO L13N T2 MRCC 32/70T(NC)
EXCLK C2 N	AD18	IO L14P T2 SRCC 32/70T(NC)
	AD17	IO L14N T2 SRCC 32/70T(NC)
	AD20	IO L15P T2 DQS 32/70T(NC)
	AE20	IO L15N T2 DQS 32/70T(NC)
	AA19	IO L16P T2 32/70T(NC)
	AA20	IO L16N T2 32/70T(NC)
	AC19	IO L17P T2 32/70T(NC)
	AD19	IO L17N T2 32/70T(NC)
	AB19	IO L18P T2 32/70T(NC)
	AB20	IO L18N T2 32/70T(NC)
	Y17	IO L19P T3 32/70T(NC)
	Y18	IO L19N T3 VREF 32/70T(NC)
VREFC	Y16	IO L20P T3 32/70T(NC)
IOC63	V17	IO L20N T3 32/70T(NC)
IOC70	W18	IO L21P T3 DQS 32/70T(NC)
IOC71	W19	IO L21N T3 DQS 32/70T(NC)
IOC54	W13	IO L22P T3 32/70T(NC)
IOC65	W16	IO L22N T3 32/70T(NC)
IOC44	V18	IO L23P T3 32/70T(NC)
IOC45	V19	IO L23N T3 32/70T(NC)
IOC82	V14	IO L24P T3 32/70T(NC)
IOC83	W14	IO L24N T3 32/70T(NC)

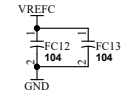
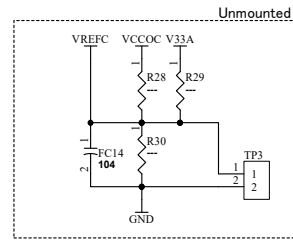


Bank12 HRBank  
HP(1.2V-3.3V)



Bank32 HP Bank  
HP(1.2V-1.8V)

IOC can not be used at 70T device.

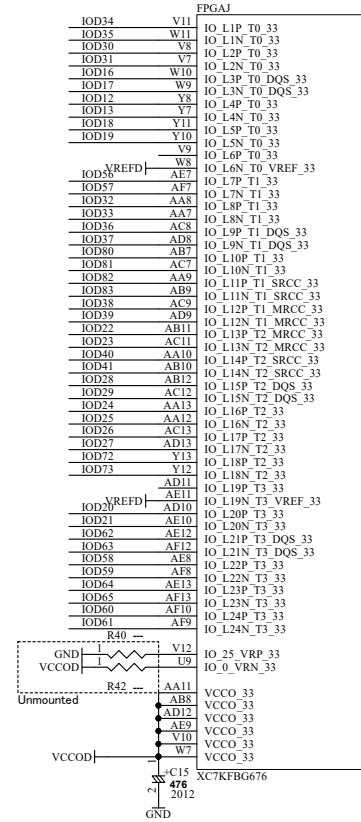
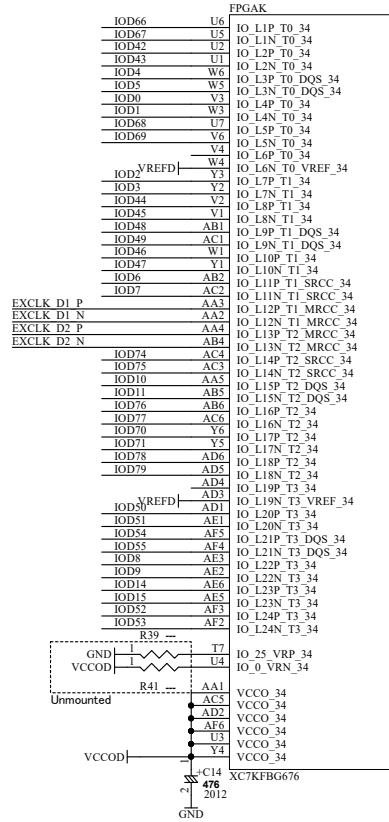


XCM212LR2-SCH-D.pdf

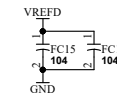
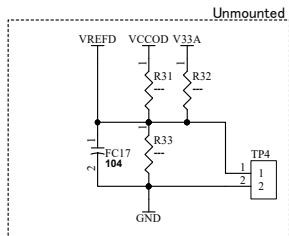


DSN:	TITLE: KINTEX-7 FPGA676 Board
DOC. No:	XCM-212L
FILE: IOC.SchDoc	DATE: 2023/08/02 10:27:20
Sheet: 4 / 6	D

IOD[0..83]	IOD[0..83]
EXCLK D1 P	EXCLK D1 P
EXCLK D1 N	EXCLK D1 N
EXCLK D2 P	EXCLK D2 P
EXCLK D2 N	EXCLK D2 N



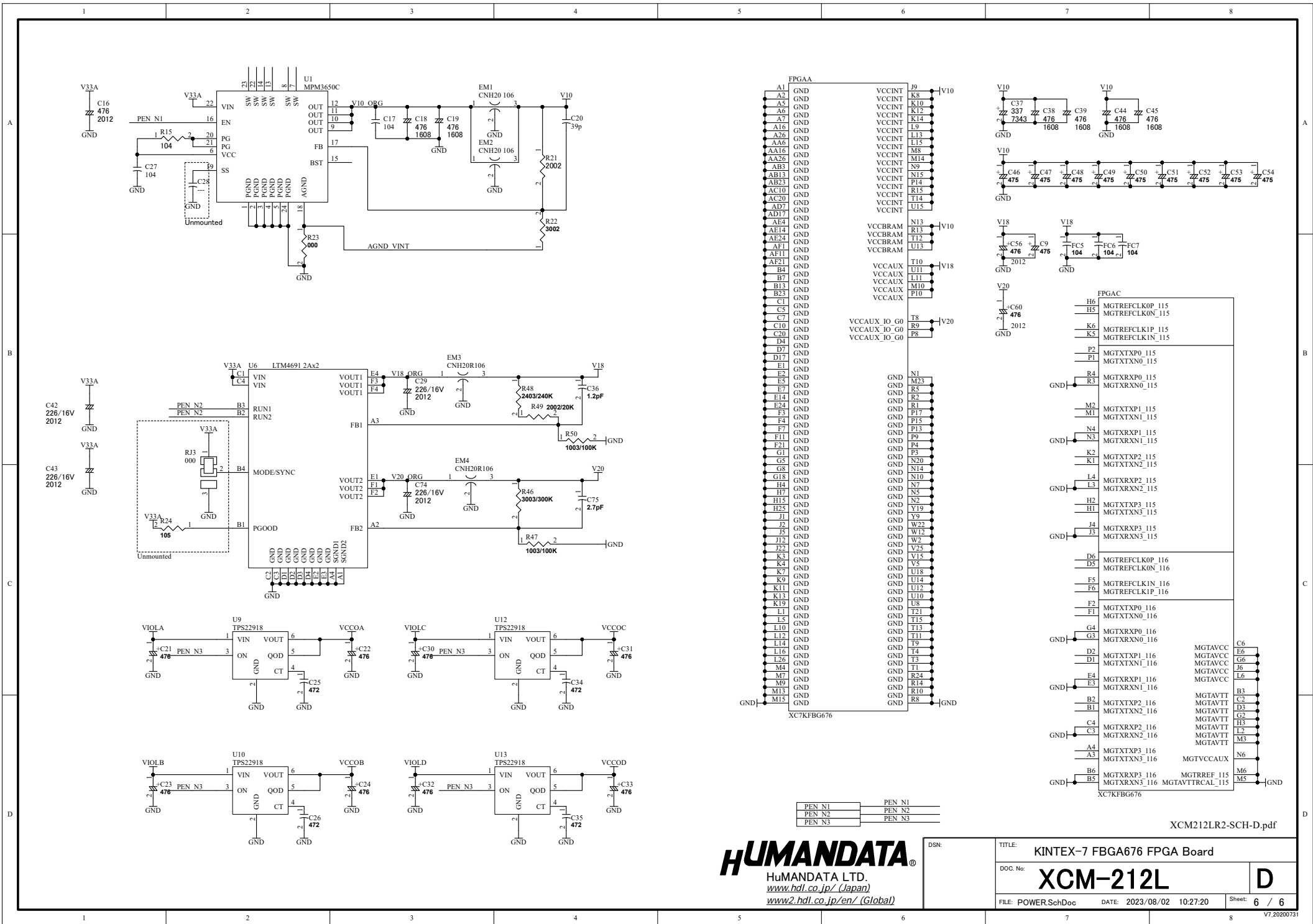
Bank34/Bank33  
HP Bank  
VCCOD(1.2V-1.8V)



XCM212LR2-SCH-D.pdf

**HUMAN DATA**  
HuMANDATA LTD.  
www.hdl.co.jp / (Japan)  
www2.hdl.co.jp/en / (Global)

DSN:	TITLE: KINTEX-7 FPGA676 FPGA Board
DOC. No:	XCM-212L
FILE: IOD.SchDoc	DATE: 2023/08/02 10:27:20
Sheet: 5 / 6	D



**HUMAN DATA**  
 HuMANDATA LTD.  
[www.hdl.co.jp/](http://www.hdl.co.jp/) (Japan)  
[www2.hdl.co.jp/en/](http://www2.hdl.co.jp/en/) (Global)

DSN:	TITLE: KINTEX-7 FPGA676 Board
DOC. No:	<b>XCM-212L</b>
FILE: POWER.SchDoc	DATE: 2023/08/02 10:27:20
Sheet:	6 / 6

XCM212L2R2-SCH-D.pdf