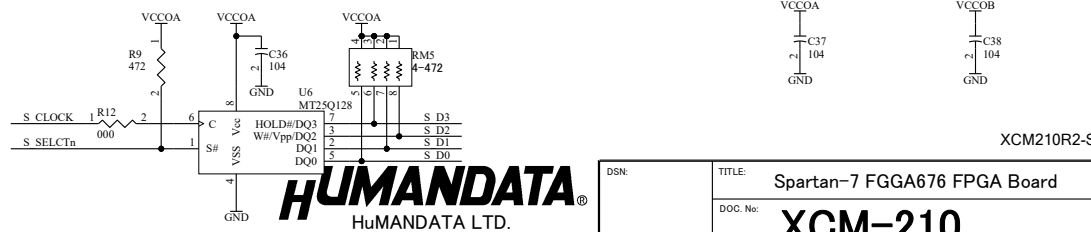
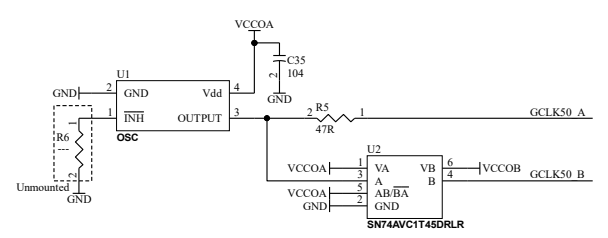
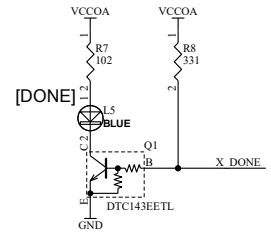
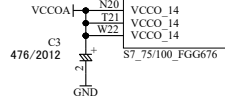
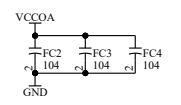
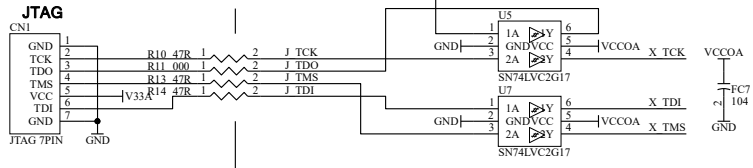
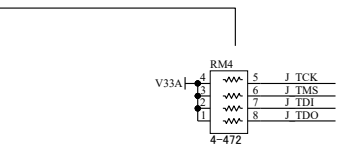
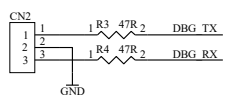
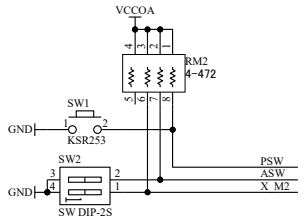
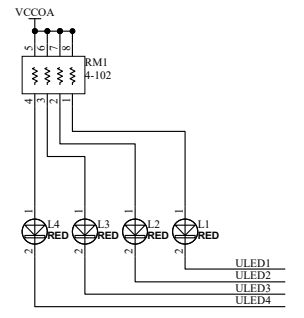
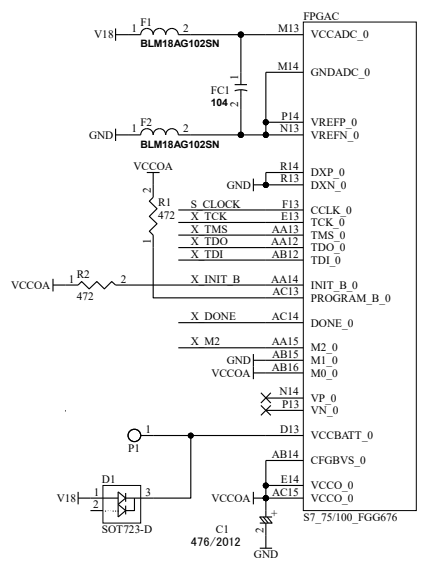
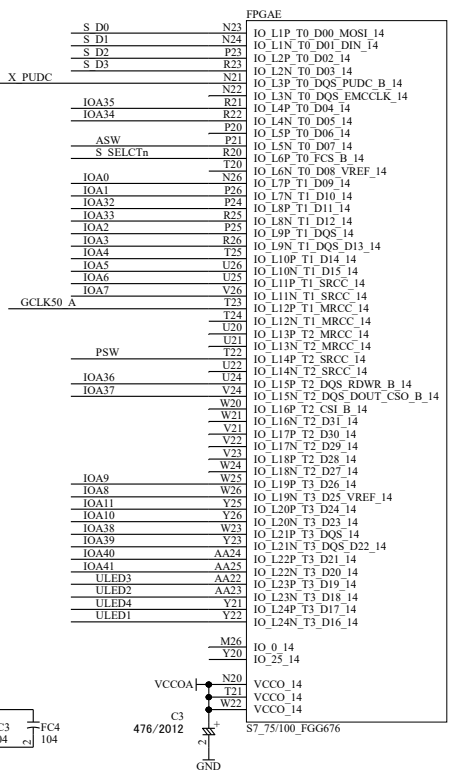
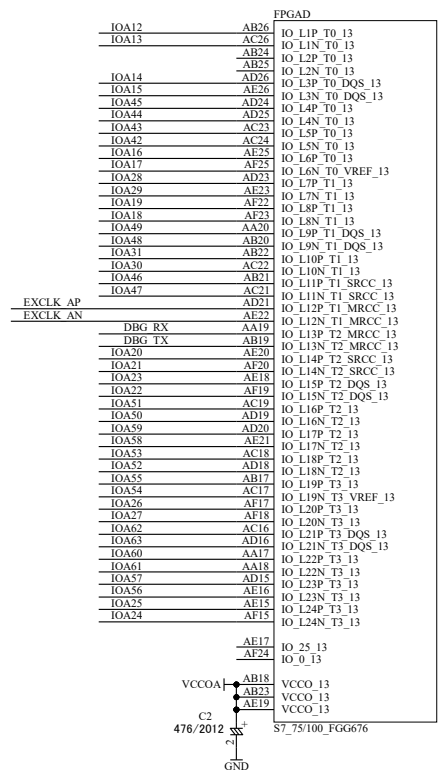
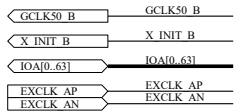


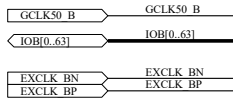
DSN:		TITLE: Spartan-7 FGA676 FPGA Board	
DOC. No:		XCM-210	
FILE: XCM210C.SchDoc		DATE: 2023/09/11 16:01:05	Sheet 1 / 5

XCM210R2-SCH-C.pdf

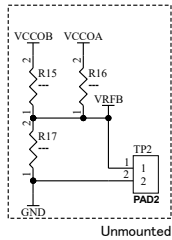
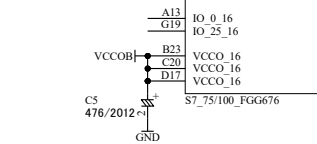


HUMAN DATA
 HUMAN DATA LTD.
www.hdl.co.jp/ (Japan)
www2.hdl.co.jp/en/ (Global)

DSN:	TITLE: Spartan-7 FGA676 FPGA Board
DOC. No:	XCM-210
FILE: IOA_CONFIG.SchDoc	DATE: 2023/09/11 16:01:06
Sheet:	2 / 5

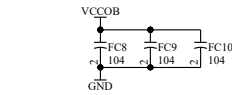
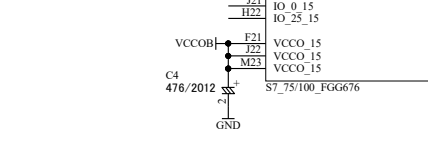


FPGAG	
F14	IO L1P T0 16
F15	IO L1N T0 16
E15	IO L2P T0 16
E16	IO L2N T0 16
A14	IO L3P T0 DQS_16
A15	IO L3N T0 DQS_16
B14	IO L4P T0 16
B15	IO L4N T0 16
D14	IO L5P T0 16
D15	IO L5N T0 16
C13	IO L6P T0 16
C14	IO L6N T0 VREF_16
C17	IO L7P T1 16
C18	IO L7N T1 16
D16	IO L7N T1 16
D16	IO L8P T1 16
C16	IO L8N T1 16
B16	IO L9P T1 DQS_16
B17	IO L9N T1 DQS_16
E17	IO L10P T1 16
E18	IO L10N T1 16
A17	IO L11P T1 SRCC_16
A18	IO L11N T1 SRCC_16
F17	IO L12P T1 MRCC_16
F18	IO L12N T1 MRCC_16
D18	IO L13P T2 MRCC_16
C19	IO L13N T2 MRCC_16
C19	IO L14P T2 SRCC_16
E20	IO L14N T2 SRCC_16
E21	IO L14P T2 SRCC_16
F19	IO L14N T2 SRCC_16
F20	IO L15P T2 DQS_16
D19	IO L15N T2 DQS_16
D19	IO L16P T2 16
D20	IO L16N T2 16
B19	IO L17P T2 16
B20	IO L17N T2 16
A19	IO L18P T2 16
A20	IO L18N T2 16
D21	IO L19P T3 16
C21	IO L19N T3 VREF_16
A22	IO L20P T3 16
A23	IO L20N T3 16
A24	IO L21P T3 DQS_16
A25	IO L21N T3 DQS_16
B21	IO L21P T3 DQS_16
B22	IO L22P T3 16
C24	IO L22N T3 16
C24	IO L23P T3 16
B24	IO L23N T3 16
C22	IO L24P T3 16
C23	IO L24N T3 16



Unmounted

FPGAF	
J20	IO L1P T0 AD0P_15
H21	IO L1N T0 AD0N_15
J19	IO L2P T0 AD0P_15
H19	IO L2N T0 AD0N_15
K21	IO L3P T0 DQS_AD1P_15
K22	IO L3N T0 DQS_AD1N_15
G20	IO L4P T0 15
G21	IO L4N T0 15
L20	IO L5P T0 AD9P_15
K20	IO L5N T0 AD9N_15
M20	IO L6P T0 15
M21	IO L6N T0 VREF_15
D24	IO L7P T1 AD2P_15
D25	IO L7N T1 AD2N_15
E22	IO L8P T1 AD10P_15
D23	IO L8N T1 AD10N_15
B25	IO L9P T1 DQS_AD3P_15
B26	IO L9N T1 DQS_AD3N_15
F23	IO L10P T1 AD11P_15
F23	IO L10N T1 AD11N_15
E25	IO L11P T1 SRCC_15
E25	IO L11N T1 SRCC_15
E26	IO L12P T1 MRCC_15
D26	IO L12N T1 MRCC_15
C26	IO L13P T2 MRCC_15
G22	IO L13N T2 MRCC_15
F22	IO L13N T2 MRCC_15
J23	IO L14P T2 SRCC_15
H23	IO L14N T2 SRCC_15
H24	IO L15P T2 DQS_15
G24	IO L15N T2 DQS_15
J26	IO L16P T2 15
H26	IO L16N T2 15
F24	IO L17P T2 15
F25	IO L17N T2 15
G25	IO L18P T2 15
G26	IO L18N T2 15
M22	IO L19P T3 15
L23	IO L19N T3 VREF_15
K23	IO L20P T3 15
J24	IO L20N T3 15
J24	IO L21P T3 DQS_15
J25	IO L21N T3 DQS_15
M24	IO L22P T3 15
L24	IO L22N T3 15
K25	IO L23P T3 15
K26	IO L23N T3 15
M25	IO L24P T3 RS1_15
L25	IO L24N T3 RS0_15



XCM210R2-SCH-C.pdf

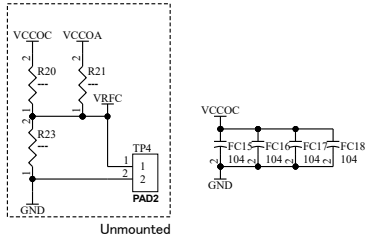
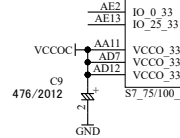
HUMAN DATA
 HUMAN DATA LTD.
 www.hdl.co.jp/ (Japan)
 www2.hdl.co.jp/en/ (Global)

DSN:	TITLE: Spartan-7 FGA676 FPGA Board	C
DOC. No:	XCM-210	
FILE: IOB.SchDoc	DATE: 2023/09/11 16:01:06	Sheet: 3 / 5

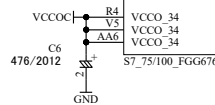
IOCI0_831	IOCI0_831
EXCLK_C1P	EXCLK_C1P
EXCLK_C1N	EXCLK_C1N
EXCLK_C2P	EXCLK_C2P
EXCLK_C2N	EXCLK_C2N

IODI0_831	IODI0_831
EXCLK_D1P	EXCLK_D1P
EXCLK_D1N	EXCLK_D1N
EXCLK_D2P	EXCLK_D2P
EXCLK_D2N	EXCLK_D2N

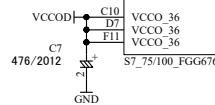
FPGA	
IOCI13	AD1
IOCI12	AE1
IOCI57	AC3
IOCI56	AC2
IOCI70	AF3
IOCI11	AF2
IOCI8	AF5
IOCI9	AF4
IOCI35	AC4
IOCI54	AD4
IOCI50	VRFC AE3
IOCI51	AE5
IOCI52	AD6
IOCI53	AD5
IOCI33	AA8
IOCI32	AB7
IOCI30	AB6
IOCI31	AC6
IOCI28	AC8
IOCI29	AC7
EXCLK_C1P	AE8
EXCLK_C1N	AE7
EXCLK_C2P	AA10
EXCLK_C2N	AB10
IOCI6	AF8
IOCI7	AF7
IOCI26	AC9
IOCI27	AD8
IOCI48	AD10
IOCI49	AD9
IOCI4	AF10
IOCI5	AF9
IOCI24	AA9
IOCI25	AB9
IOCI2	VRFC AC12
IOCI3	AD11
IOCI46	AE12
IOCI47	AE10
IOCI0	AF14
IOCI1	AF13
IOCI44	AB11
IOCI45	AC11
IOCI43	AD14
IOCI42	AD13
AE2	IO 0_33
AE13	IO 25_33
VCCOC	VCCO_33
AD7	VCCO_33
AD12	VCCO_33



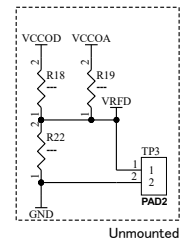
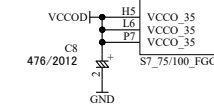
FPGA	
IOCI81	P3
IOCI80	R3
IOCI23	P1
IOCI22	R1
IOCI75	P5
IOCI74	P4
IOCI71	R2
IOCI70	T2
IOCI83	R5
IOCI82	T5
IOCI15	VRFC R6
IOCI14	AC1
IOCI62	Y3
IOCI63	Y2
IOCI17	AA2
IOCI16	AB1
IOCI19	W1
IOCI18	Y1
IOCI21	U1
IOCI20	V1
IOCI67	V3
IOCI66	V2
IOCI65	T7
IOCI64	U7
IOCI73	U6
IOCI72	U5
IOCI79	T4
IOCI78	U4
IOCI41	F7
IOCI40	V6
IOCI69	T3
IOCI68	U2
IOCI77	V4
IOCI76	W3
IOCI37	VRFC W4
IOCI36	AA5
IOCI39	W6
IOCI38	Y6
IOCI58	AB5
IOCI59	AB4
IOCI61	AA4
IOCI60	AA3
IOCI35	Y7
IOCI34	AA7
P6	IO 0_34
Y8	IO 25_34
VCCOC	VCCO_34
D7	VCCO_34
AA6	VCCO_34



FPGA	
IOD0	E11
IOD1	E10
IOD42	F12
IOD43	E12
IOD48	D11
IOD49	D10
IOD61	A10
IOD60	B10
IOD46	C12
IOD47	C11
IOD5	VRFC F8
IOD4	E8
IOD50	D9
IOD51	C8
IOD63	B9
IOD62	A9
IOD2	F10
IOD3	F9
IOD64	A8
IOD65	A7
EXCLK_D1P	D9
EXCLK_D1N	D8
EXCLK_D2P	C7
EXCLK_D2N	C6
IOD54	B7
IOD55	B6
IOD7	E6
IOD6	D6
IOD52	E5
IOD53	E7
IOD9	E5
IOD8	D5
IOD22	L4
IOD66	C3
IOD59	VRFC C2
IOD58	C4
IOD70	B2
IOD71	B1
IOD68	A3
IOD69	A2
IOD73	D1
IOD72	C1
IOD37	D4
IOD36	D3
IO 0_36	A12
IO 25_36	A4
VCCOD	VCCO_36
C10	VCCO_36
F11	VCCO_36



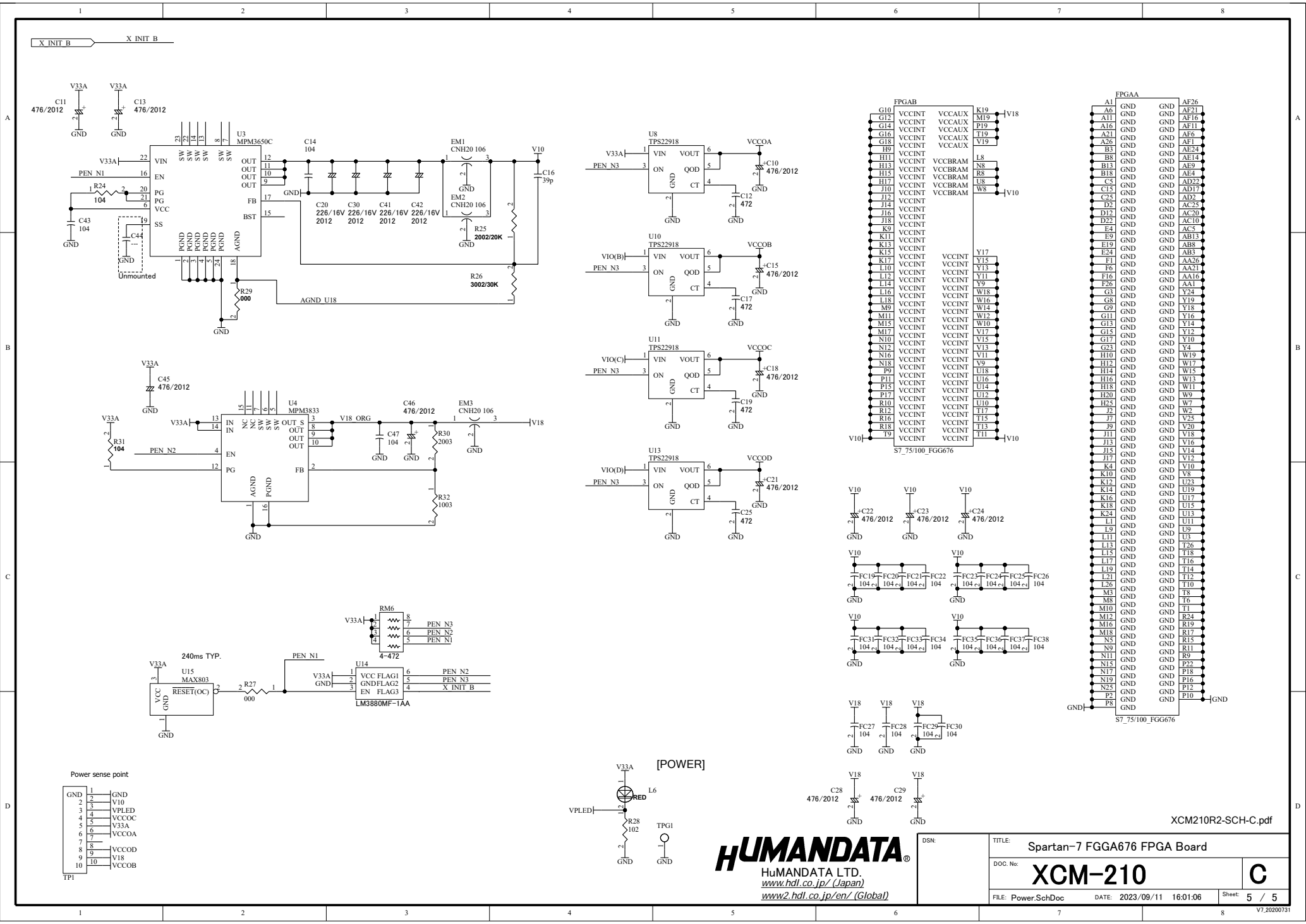
FPGA	
IOD34	G5
IOD35	F5
IOD44	K8
IOD45	J8
IOD10	G4
IOD11	F4
IOD57	H6
IOD56	G6
IOD14	J6
IOD15	J5
IOD32	VRFC G7
IOD33	F2
IOD13	F3
IOD12	E3
IOD77	H1
IOD76	G1
IOD74	E2
IOD75	E1
IOD16	H3
IOD17	H2
IOD30	J4
IOD31	H4
IOD39	K7
IOD38	K6
IOD41	M7
IOD40	L7
IOD28	L5
IOD29	K5
IOD27	N6
IOD26	M6
IOD25	M5
IOD24	M4
IOD23	L3
IOD19	VRFC N3
IOD18	K3
IOD21	L2
IOD20	K2
IOD83	N2
IOD82	N1
IOD79	J1
IOD78	J1
IOD81	M2
IOD80	M1
IO 0_35	H8
IO 25_35	N7
VCCOD	VCCO_35
H5	VCCO_35
L6	VCCO_35
P7	VCCO_35



XCM210R2-SCH-C.pdf

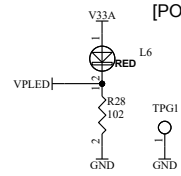
HUMAN DATA
 HUMAN DATA LTD.
[www.hdl.co.jp/ \(Japan\)](http://www.hdl.co.jp/)
[www2.hdl.co.jp/en/ \(Global\)](http://www2.hdl.co.jp/en/)

DSN:	TITLE: Spartan-7 FGA676 FPGA Board	
DOC. No:	XCM-210	C
FILE: IOC.IOD.SchDoc	DATE: 2023/09/11 16:01:06	Sheet: 4 / 5



Power sense point

1	GND
2	V10
3	VPLED
4	VCCOC
5	V33A
6	VCCOA
7	V18
8	VCCOD
9	V18
10	VCCOB



HUMAN DATA
 HuMANDATA LTD.
[www.hdl.co.jp/ \(Japan\)](http://www.hdl.co.jp/)
[www2.hdl.co.jp/en/ \(Global\)](http://www2.hdl.co.jp/en/)

DSN:	TITLE: Spartan-7 FGA676 FPGA Board
DOC. No:	XCM-210
FILE: Power.SchDoc	DATE: 2023/09/11 16:01:06
Sheet:	5 / 5

XCM210R2-SCH-C.pdf