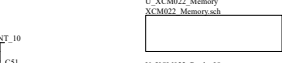
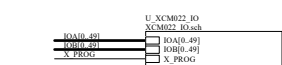
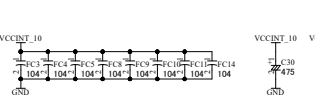
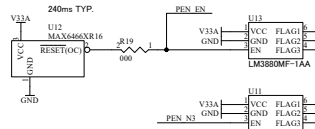
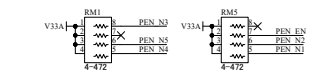
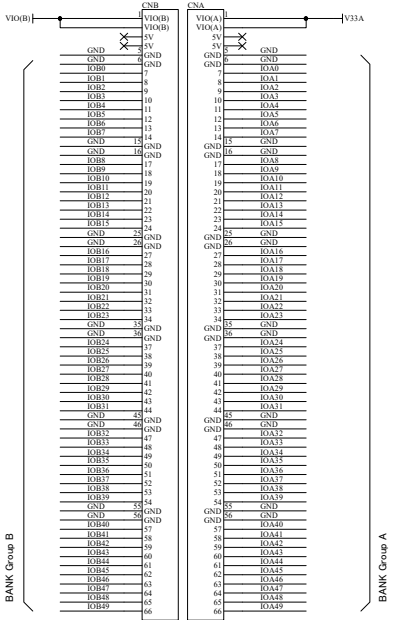
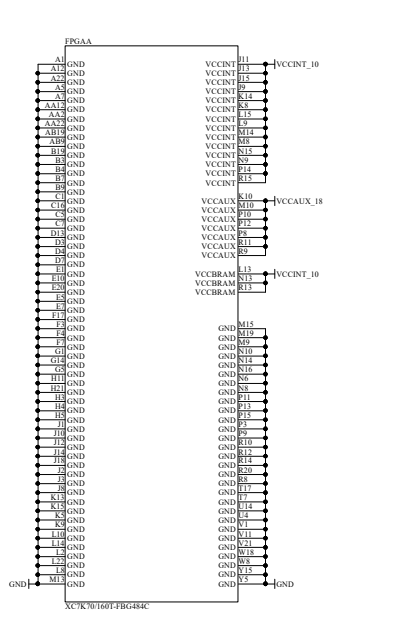
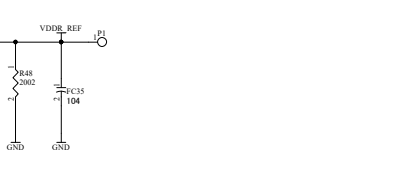
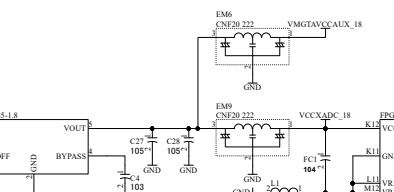
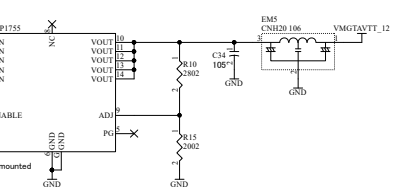
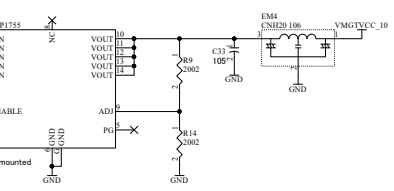
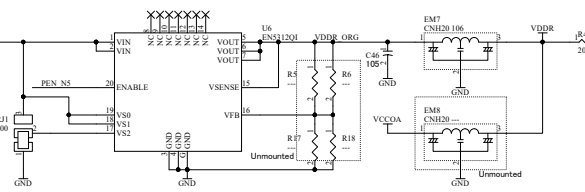
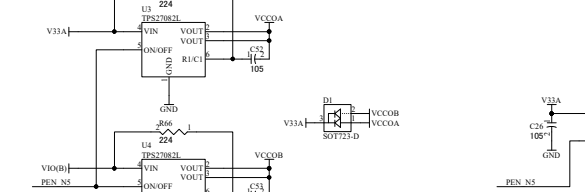
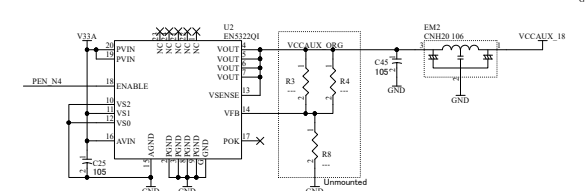
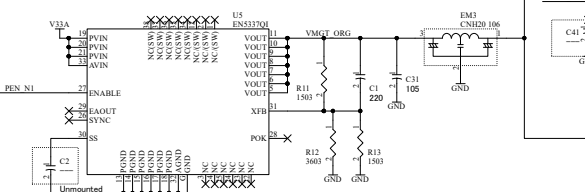
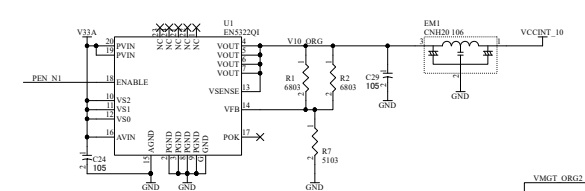
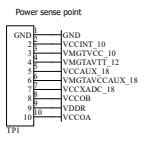


V33A	V33A
V33B	V33B
VCCINT_10	VCCINT_10
VMGT_VCC_10	VMGT_VCC_10
VMGT_VTT_12	VMGT_VTT_12
VMGT_VCCAUX_18	VMGT_VCCAUX_18
VCCAUX_18	VCCAUX_18
VCCADC_18	VCCADC_18
VCCOA	VCCOA
VCCOB	VCCOB
GND	GND

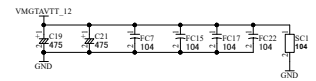
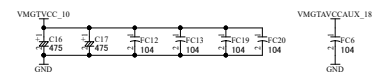
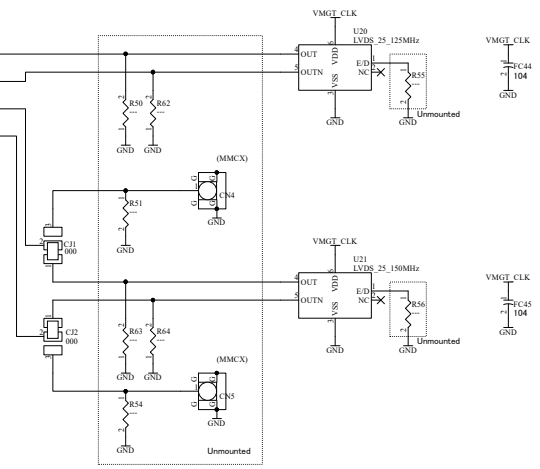
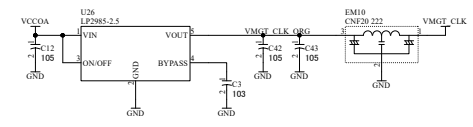
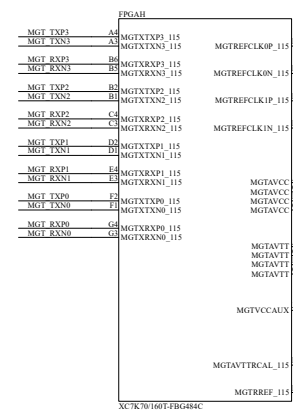
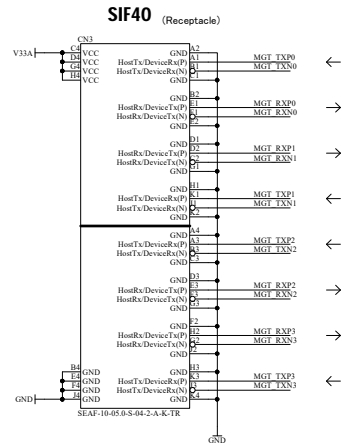
[POWER]



XCM022R1-SCH-E1.pdf	
KINTEX FBG484 FPGA Board	
DOC No:	XCM-022
FILE:	XCM022E.sch
DATE:	2019/12/03 11:35:39
Sheet:	1 / 4

E1

V33A	V33A
V33B	V33B
VCCINT_10	VCCINT_10
VMGTVCC_10	VMGTVCC_10
VMGTAVTT_12	VMGTAVTT_12
VCCCAUX_18	VCCCAUX_18
VCCCAUX_18	VCCCAUX_18
VCCXADC_18	VCCXADC_18
VCCCOA	VCCCOA
VCCCOR	VCCCOR
GND	GND



XCM022R1-SCH-E1.pdf



DSN	TITLE	KINTEX FBG484 FPGA Board	
DOC No.	XCM-022	E1	
FILE	XCM022_RocketIO.sch	DATE	2019/12/03 11:35:40
Sheet	4	of	4