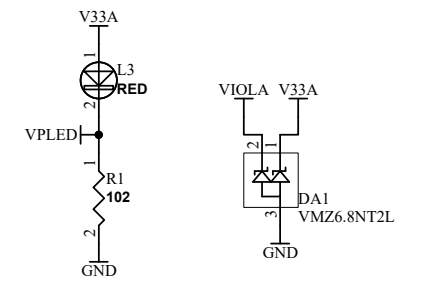
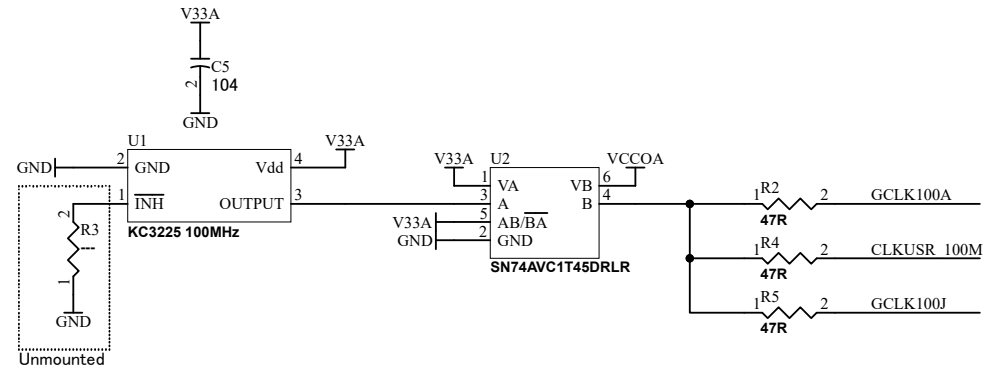
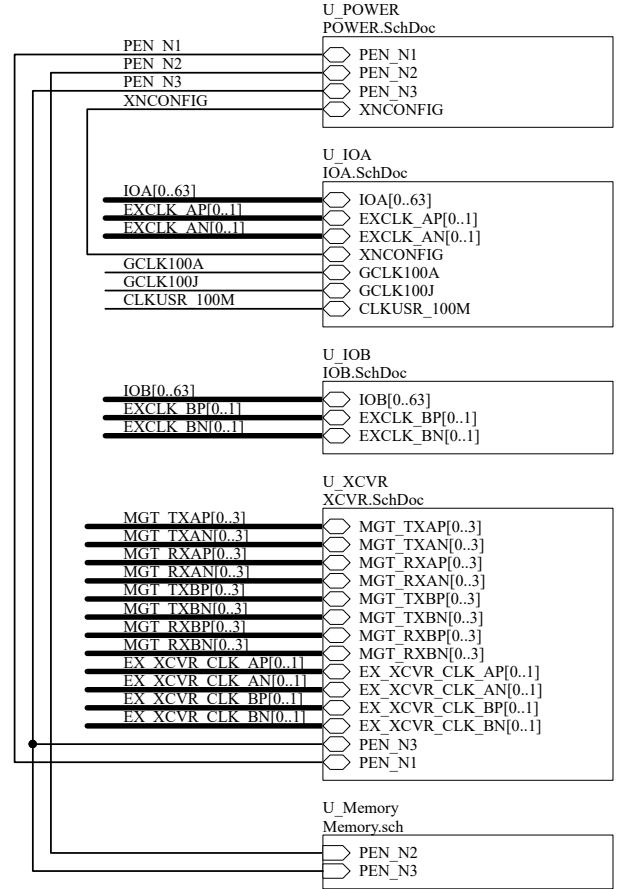
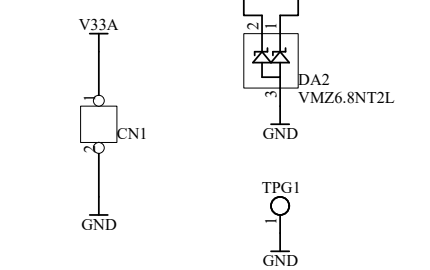


[POWER]



[FAN-PWR]

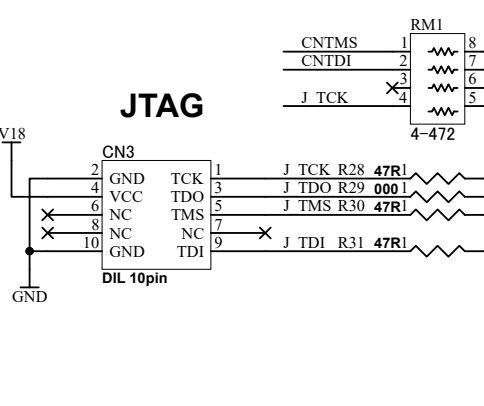
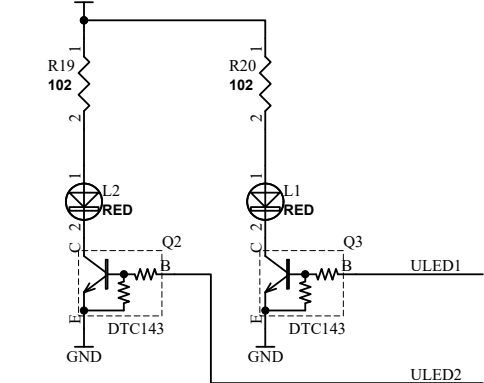
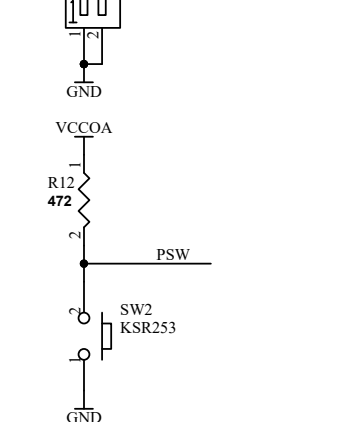
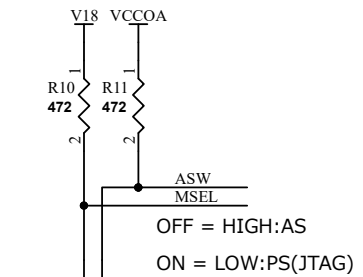
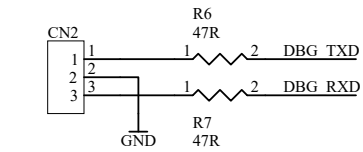


ACM501LR1-SCH-C.pdf

**HUMANDATA**  
 HuMANDATA LTD.  
[www.hdl.co.jp/](http://www.hdl.co.jp/) (Japan)  
[www2.hdl.co.jp/en/](http://www2.hdl.co.jp/en/) (Global)

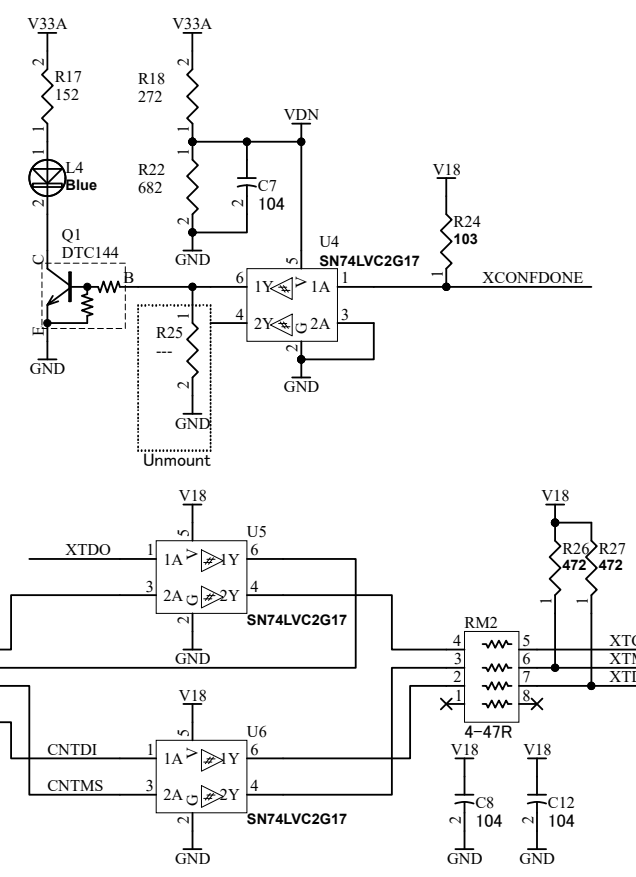
DSN:	TITLE: Intel Cyclone 10 GX F672 FPGA Board
DOC. No:	<b>ACM-501L</b>
FILE: ACM501C.SchDoc	DATE: 2023/04/06 10:38:30
Sheet: 1 / 6	<b>C</b>

IOA[0..63]	IOA[0..63]
EXCLK AP[0..1]	EXCLK AP[0..1]
EXCLK AN[0..1]	EXCLK AN[0..1]
GCLK100A	GCLK100A
GCLK100J	GCLK100J
XNCONFIG	XNCONFIG
CLKUSR 100M	CLKUSR 100M



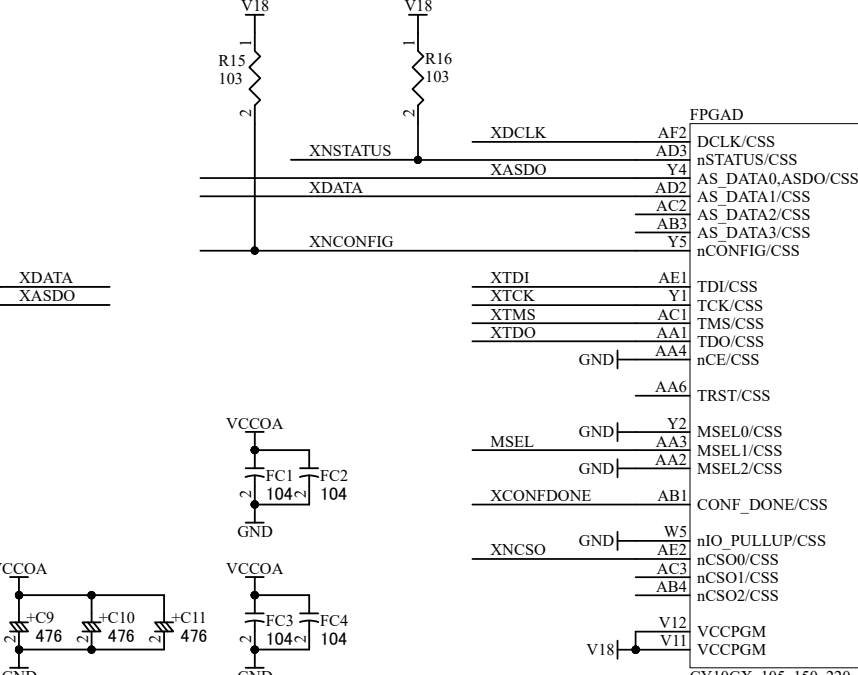
FPGA	
EXCLK AN1	AC5
EXCLK AP1	AD5
	Y14
GCLK100A	AA14
IOA31	AC7
IOA30	AC6
IOA47	W15
IOA46	Y15
	AE5
	AE4
IOA13	AD9
IOA12	AE9
IOA29	AD7
IOA28	AE7
IOA19	AF4
IOA18	AF3
IOA17	AE6
IOA16	AF6
IOA15	AF8
IOA14	AF7
IOA27	AC8
IOA26	AD8
IOA59	AC10
IOA58	AD10
	AB6
	AB5
	AB10
	AB9
IOA53	AD13
IOA52	AD12
IOA51	AB14
IOA50	AB13
IOA57	AB11
IOA56	AC11
	AC13
	AC12
IOA25	AA9
IOA24	AB8
IOA23	W9
IOA22	W8
IOA21	AA13
IOA20	AA12
IOA63	AA8
IOA62	AA7
IOA61	W10
IOA60	Y9
ULED1	AA11
ULED2	Y10
	V15
VRFA	VREFB2AN0/2A
	Y13
	AB12
VCCOA	AA15

CY10GX\_105\_150\_220\_F672



FPGA	
EXCLK AN0	AC18
EXCLK AP0	AD18
	AE19
GCLK100J	AF19
IOA37	AA19
IOA36	AB19
IOA1	AF17
IOA0	AF18
	W18
	W19
	Y21
	AA21
	Y19
	Y20
DBG RXD	W17
DBG TXD	Y17
	AA17
	AB16
IOA45	Y16
IOA44	AA16
IOA33	AB20
IOA32	AB21
IOA35	AC20
IOA34	AC21
IOA39	AA18
IOA38	AB18
	AD19
	AD20
PSW	AB15
ASW	AC15
IOA41	AD17
IOA40	AE17
IOA43	AC16
IOA42	AC17
IOA3	AE16
IOA2	AF16
IOA11	AE10
IOA10	AF9
IOA9	AF12
IOA8	AF11
IOA5	AE15
IOA4	AE14
IOA49	AD15
IOA48	AD14
IOA55	AE12
IOA54	AE11
IOA7	AF13
IOA6	AF14
	V17
VRFA	VREFB2JN0/2J
	Y18
VCCOA	W16
	AB17

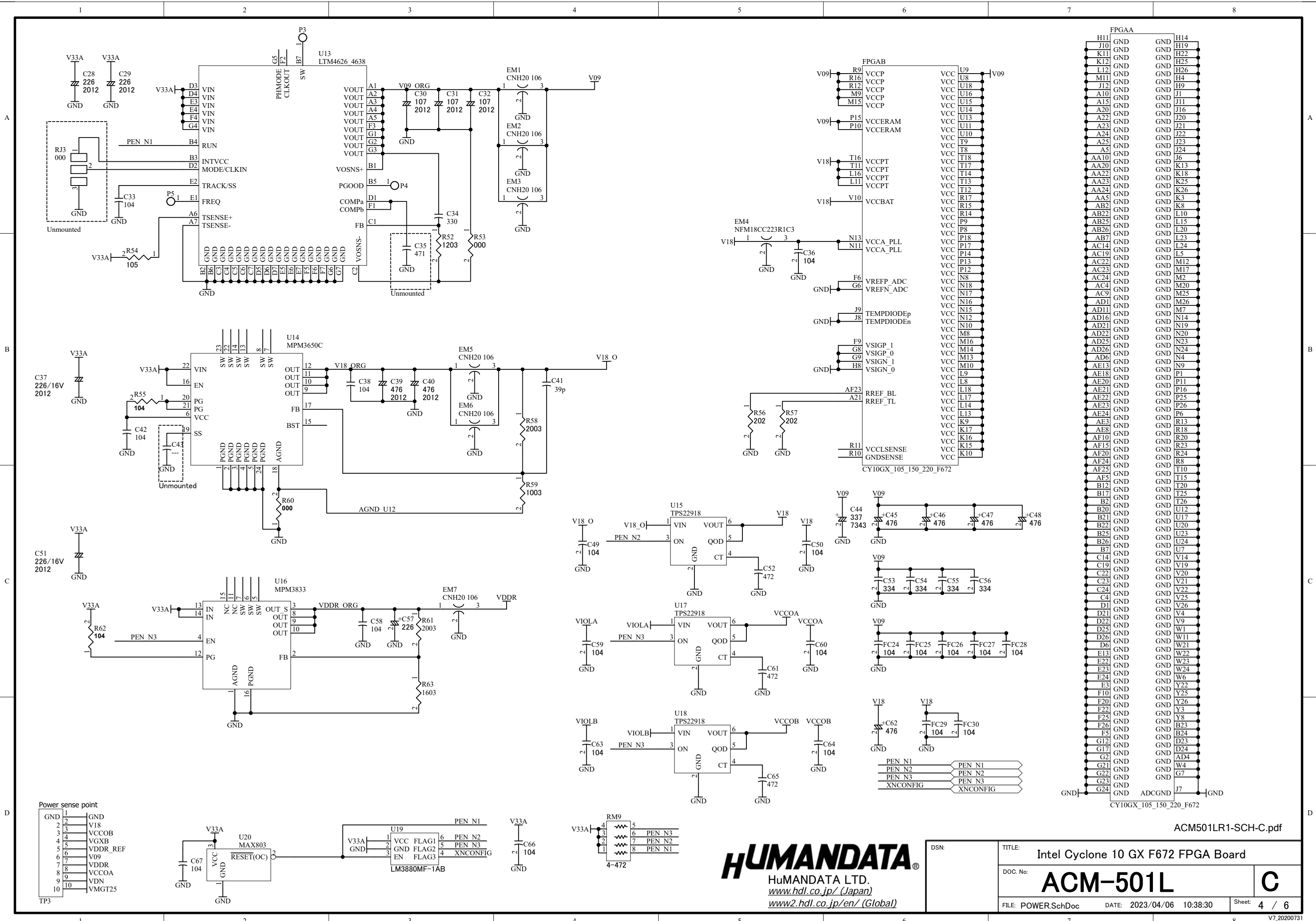
CY10GX\_105\_150\_220\_F672



**HUMAN DATA**  
 HuMANDATA LTD.  
[www.hdl.co.jp/](http://www.hdl.co.jp/) (Japan)  
[www2.hdl.co.jp/en/](http://www2.hdl.co.jp/en/) (Global)

DSN:	TITLE: Intel Cyclone 10 GX F672 FPGA Board
DOC No:	ACM-501L
FILE: IOA.SchDoc	DATE: 2023/04/06 10:38:30
Sheet: 2 / 6	





FPGA

H11	GND	H14	GND
J10	GND	H19	GND
K11	GND	H22	GND
K12	GND	H25	GND
L12	GND	H26	GND
M11	GND	H4	GND
J12	GND	H9	GND
A10	GND	J1	GND
A15	GND	J11	GND
A20	GND	J16	GND
A22	GND	J20	GND
A23	GND	J21	GND
A24	GND	J22	GND
A25	GND	J23	GND
T8	GND	J24	GND
T9	GND	J6	GND
T18	GND	J13	GND
AA10	GND	K13	GND
AA20	GND	K18	GND
AA22	GND	K25	GND
AA23	GND	K26	GND
AA24	GND	K3	GND
AA5	GND	K8	GND
AB2	GND	L10	GND
AB22	GND	L15	GND
AB25	GND	L20	GND
AB7	GND	L23	GND
AC14	GND	L24	GND
AC19	GND	L5	GND
AC22	GND	M12	GND
AC23	GND	M17	GND
AC24	GND	M2	GND
AC4	GND	M20	GND
AC9	GND	M25	GND
AD1	GND	M26	GND
AD11	GND	M7	GND
AD16	GND	N14	GND
AD21	GND	N19	GND
AD22	GND	N20	GND
AD25	GND	N23	GND
AD26	GND	N24	GND
AD6	GND	N4	GND
AE13	GND	N9	GND
AE18	GND	P1	GND
AE20	GND	P11	GND
AE21	GND	P16	GND
AE22	GND	P25	GND
AE23	GND	P26	GND
AE24	GND	P6	GND
AE3	GND	R13	GND
AE8	GND	R18	GND
AF10	GND	R20	GND
AF15	GND	R23	GND
AF20	GND	R24	GND
AF24	GND	R8	GND
AF25	GND	T10	GND
AF5	GND	T15	GND
B12	GND	T20	GND
B17	GND	T25	GND
B20	GND	U12	GND
B21	GND	U17	GND
B22	GND	U20	GND
B25	GND	U23	GND
B26	GND	U24	GND
B7	GND	U7	GND
C14	GND	V14	GND
C19	GND	V19	GND
C22	GND	V20	GND
C23	GND	V21	GND
C24	GND	V25	GND
C4	GND	V26	GND
D1	GND	V4	GND
D21	GND	V9	GND
D22	GND	W1	GND
D25	GND	W11	GND
D26	GND	W21	GND
D6	GND	W22	GND
E13	GND	W23	GND
E22	GND	W24	GND
E23	GND	W6	GND
E24	GND	Y22	GND
E3	GND	Y25	GND
F10	GND	Y26	GND
F20	GND	Y3	GND
F22	GND	Y8	GND
F25	GND	B23	GND
F26	GND	B24	GND
F5	GND	B25	GND
G12	GND	D23	GND
G17	GND	D24	GND
G2	GND	D4	GND
G21	GND	W4	GND
G22	GND	G7	GND
G23	GND	J7	GND
G24	GND		GND

ADC GND

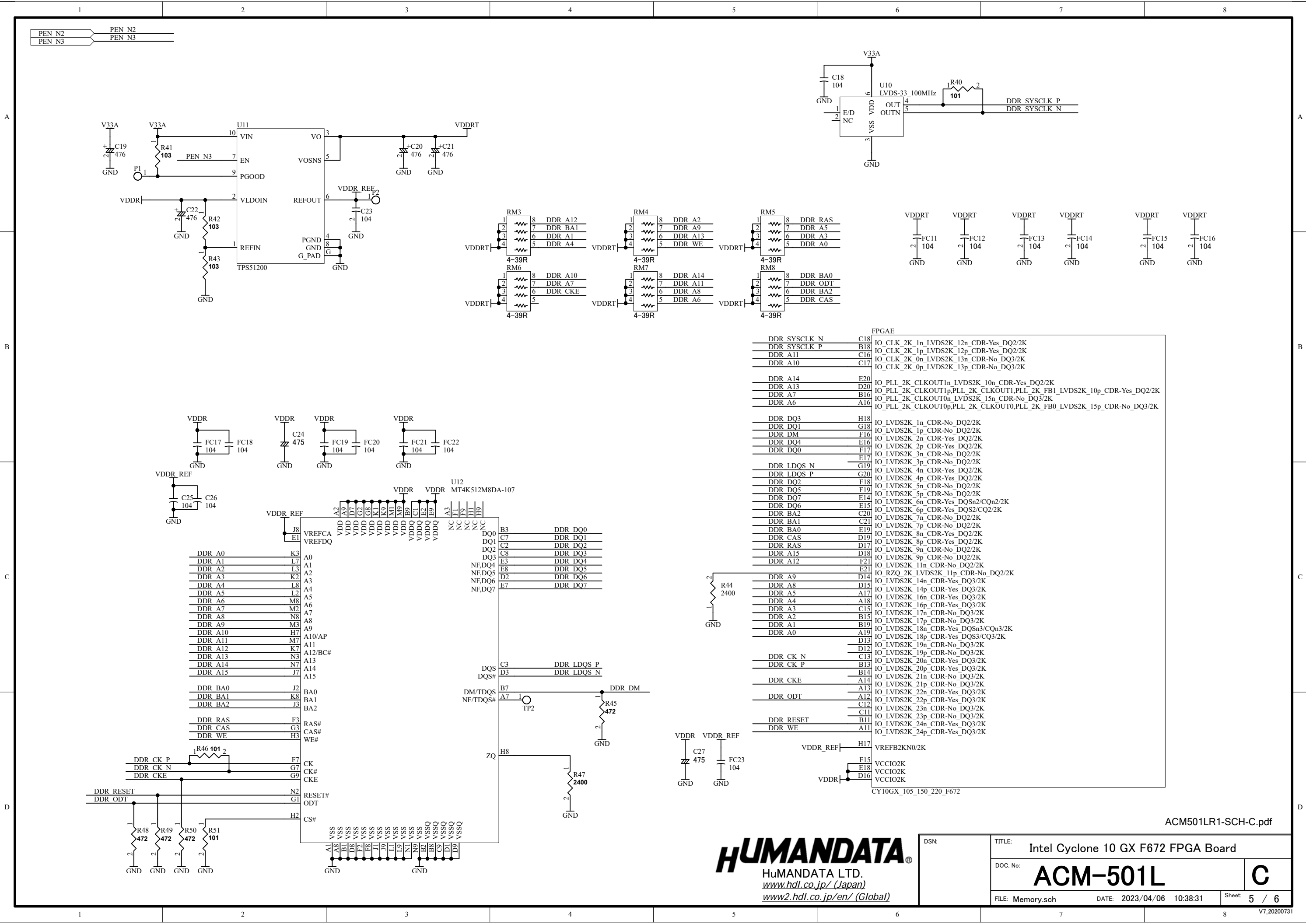
Power sense point

1	GND
2	V18
3	VCCOB
4	VGXB
5	VDDR_REF
6	V09
7	VDDR
8	VCCOA
9	VDN
10	VMGT25

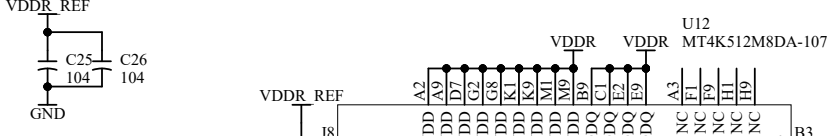
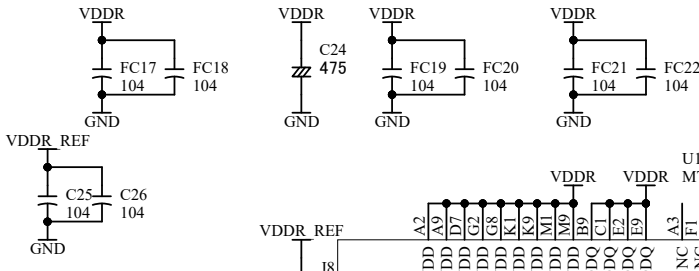
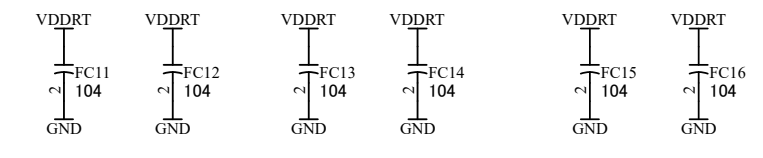
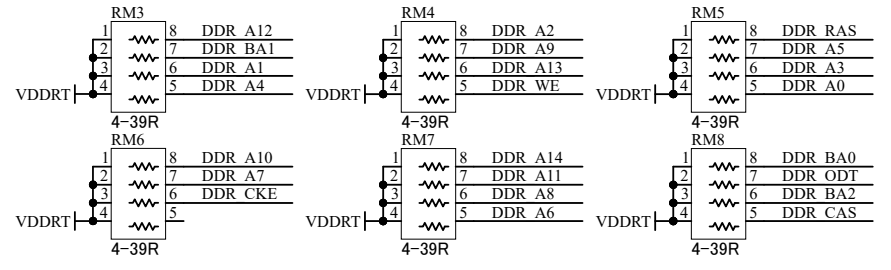
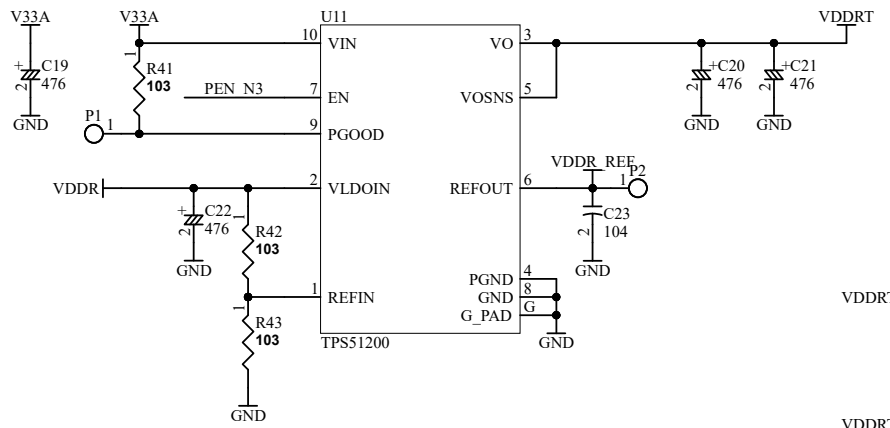
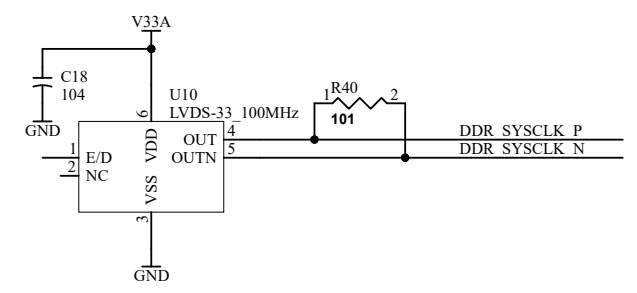
**HUMAN DATA**  
 HuMANDATA LTD.  
[www.hdl.co.jp/](http://www.hdl.co.jp/) (Japan)  
[www2.hdl.co.jp/en/](http://www2.hdl.co.jp/en/) (Global)

DSN:	TITLE: Intel Cyclone 10 GX F672 FPGA Board
DOC. No:	<b>ACM-501L</b>
FILE: POWER.SchDoc	DATE: 2023/04/06 10:38:30
Sheet: 4 / 6	<b>C</b>

ACM501LR1-SCH-C.pdf



PEN N2  
PEN N3



DDR A0	K3	A0
DDR A1	L7	A1
DDR A2	L3	A2
DDR A3	K2	A3
DDR A4	L8	A4
DDR A5	L2	A5
DDR A6	M8	A6
DDR A7	M2	A7
DDR A8	N8	A8
DDR A9	M3	A9
DDR A10	H7	A9
DDR A11	M7	A10/AP
DDR A12	K7	A11
DDR A13	N3	A12/BC#
DDR A14	N7	A13
DDR A15	J7	A14
	A15	A15
DDR BA0	J2	BA0
DDR BA1	K8	BA1
DDR BA2	J3	BA2
DDR RAS	F3	RAS#
DDR CAS	G3	CAS#
DDR WE	H3	WE#
DDR CK P	F7	CK
DDR CK N	G7	CK#
DDR CKE	G9	CKE
DDR RESET	N2	RESET#
DDR ODT	G1	ODT
	H2	CS#
	A8	VSS
	B8	VSS
	C8	VSS
	D8	VSS
	E8	VSS
	F8	VSS
	G8	VSS
	H8	VSS
	A9	VSS
	B9	VSS
	C9	VSS
	D9	VSS
	E9	VSS
	F9	VSS
	G9	VSS
	H9	VSS
	A10	VSS
	B10	VSS
	C10	VSS
	D10	VSS
	E10	VSS
	F10	VSS
	G10	VSS
	H10	VSS
	A11	VSS
	B11	VSS
	C11	VSS
	D11	VSS
	E11	VSS
	F11	VSS
	G11	VSS
	H11	VSS
	A12	VSS
	B12	VSS
	C12	VSS
	D12	VSS
	E12	VSS
	F12	VSS
	G12	VSS
	H12	VSS
	A13	VSS
	B13	VSS
	C13	VSS
	D13	VSS
	E13	VSS
	F13	VSS
	G13	VSS
	H13	VSS
	A14	VSS
	B14	VSS
	C14	VSS
	D14	VSS
	E14	VSS
	F14	VSS
	G14	VSS
	H14	VSS
	A15	VSS
	B15	VSS
	C15	VSS
	D15	VSS
	E15	VSS
	F15	VSS
	G15	VSS
	H15	VSS

FPGA	
DDR SYSCLK N	C18
DDR SYSCLK P	B18
DDR A11	C16
DDR A10	C17
DDR A14	E20
DDR A13	D20
DDR A7	B16
DDR A6	A16
DDR DQ3	H18
DDR DQ1	G18
DDR DM	F16
DDR DQ4	E16
DDR DQ0	F17
DDR LDQS N	E17
DDR LDQS P	G20
DDR DQ2	F18
DDR DQ5	F19
DDR DQ7	E14
DDR DQ6	E15
DDR BA2	C20
DDR BA1	C21
DDR BA0	E19
DDR CAS	D19
DDR RAS	D17
DDR A15	D18
DDR A12	F21
DDR A9	E21
DDR A8	D14
DDR A5	A17
DDR A4	A18
DDR A3	C15
DDR A2	B15
DDR A1	B19
DDR A0	A19
DDR CK N	D12
DDR CK P	C13
DDR CKE	B13
DDR ODT	A13
DDR RESET	C11
DDR WE	A11
VDDRT	H17
VDDRT	F15
VDDRT	E18
VDDRT	D16

CY10GX\_105\_150\_220\_F672

ACM501LR1-SCH-C.pdf



DSN:	TITLE: Intel Cyclone 10 GX F672 FPGA Board
DOC. No:	ACM-501L
FILE: Memory.sch	DATE: 2023/04/06 10:38:31
Sheet: 5 / 6	

C

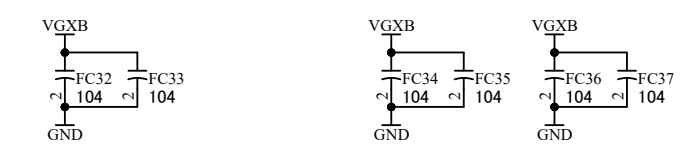
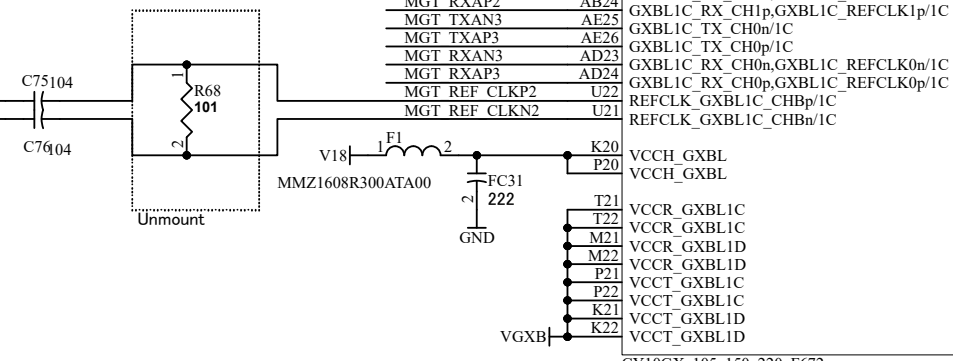
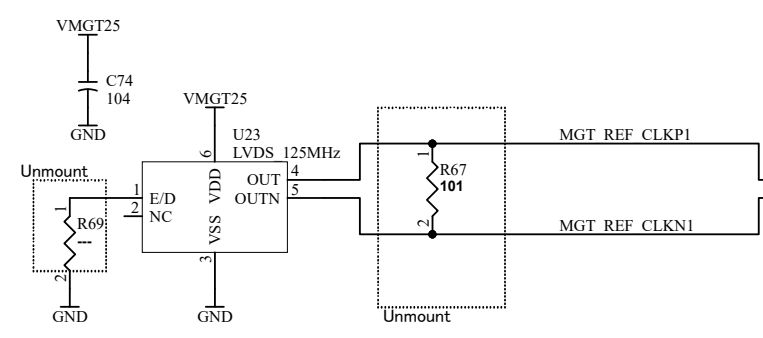
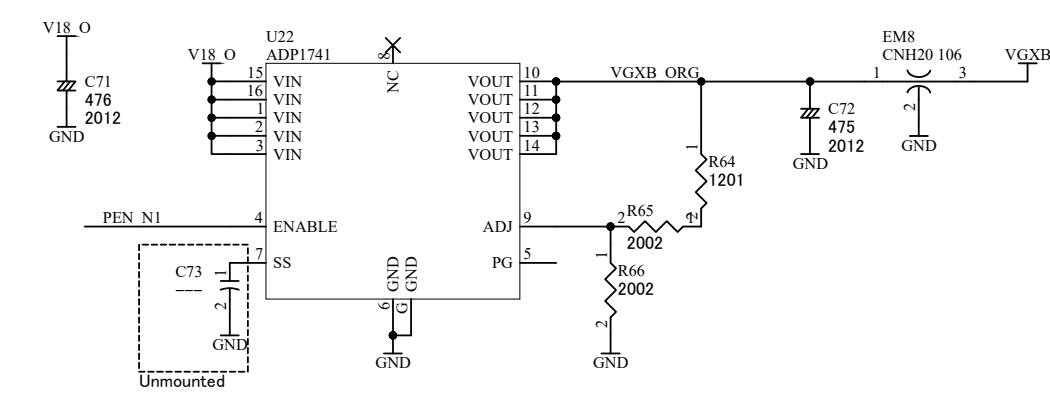
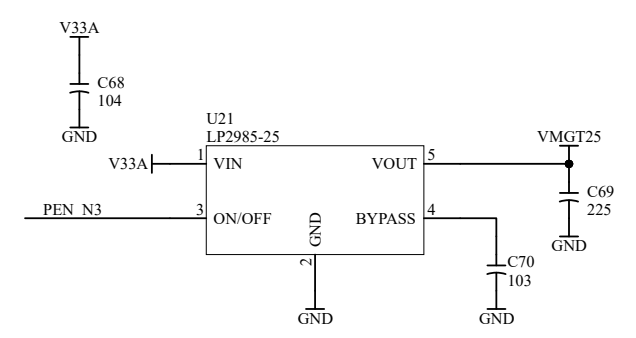
V7\_20200731

MGT TXAP[0..3] MGT TXAPI[0..3]  
 MGT TXAN[0..3] MGT TXAN[0..3]  
 MGT RXAP[0..3] MGT RXAPI[0..3]  
 MGT RXAN[0..3] MGT RXAN[0..3]  
 MGT TXBP[0..3] MGT TXBPI[0..3]  
 MGT TXBN[0..3] MGT TXBN[0..3]  
 MGT RXBP[0..3] MGT RXBPI[0..3]  
 MGT RXBN[0..3] MGT RXBN[0..3]

EX XCVR CLK AP[0..1] EX XCVR CLK API[0..1]  
 EX XCVR CLK AN[0..1] EX XCVR CLK AN[0..1]

EX XCVR CLK BP[0..1] EX XCVR CLK BPI[0..1]  
 EX XCVR CLK BN[0..1] EX XCVR CLK BN[0..1]

PEN N3 PEN N3  
 PEN N1 PEN N1



FPGAC	
EX XCVR CLK BP1	L22
EX XCVR CLK BN1	L21
MGT TXBN3	G25
MGT TXBP3	G26
MGT RXBN3	F23
MGT RXBP3	F24
MGT TXBN2	J25
MGT TXBP2	J26
MGT RXBN2	H23
MGT RXBP2	H24
MGT TXBN1	L25
MGT TXBP1	L26
MGT RXBN1	K23
MGT RXBP1	K24
MGT TXBN0	N25
MGT TXBP0	N26
MGT RXBN0	M23
MGT RXBP0	M24
EX XCVR CLK BP0	N22
EX XCVR CLK BN0	N21
EX XCVR CLK AP0	R22
EX XCVR CLK AN0	R21
	R25
	R26
EX XCVR CLK AN1	P23
EX XCVR CLK AP1	P24
	U25
	U26
	T23
	T24
MGT TXAN0	GND
MGT TXAP0	W25
MGT RXAN0	W26
MGT RXAP0	V23
MGT TXAN1	AA25
MGT TXAP1	AA26
MGT RXAN1	Y23
MGT RXAP1	Y24
MGT TXAN2	AC25
MGT TXAP2	AC26
MGT RXAN2	AB23
MGT RXAP2	AB24
MGT TXAN3	AE25
MGT TXAP3	AE26
MGT RXAN3	AD23
MGT RXAP3	AD24
MGT REF CLKP2	U22
MGT REF CLKN2	U21
VCCH_GXBL	K20
VCCH_GXBL	P20
VCCR_GXBL1C	T21
VCCR_GXBL1C	T22
VCCR_GXBL1D	M21
VCCR_GXBL1D	M22
VCCT_GXBL1C	P21
VCCT_GXBL1C	P22
VCCT_GXBL1D	K21
VCCT_GXBL1D	K22

CY10GX\_105\_150\_220\_F672