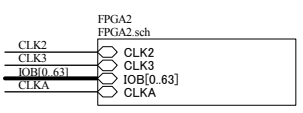
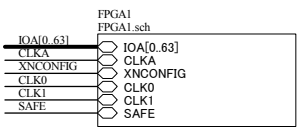
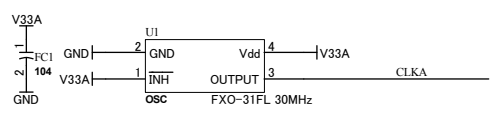
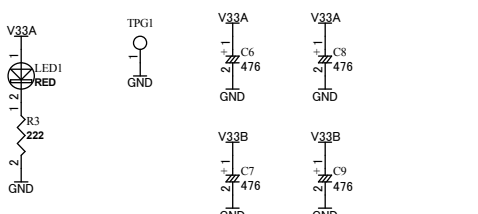
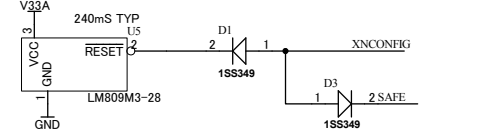
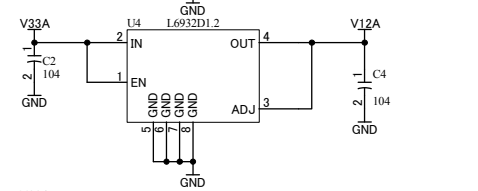
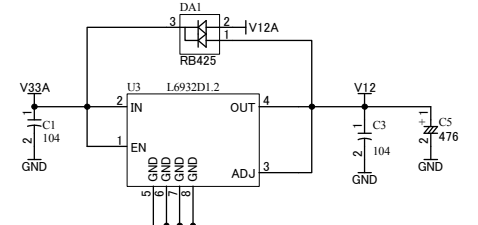


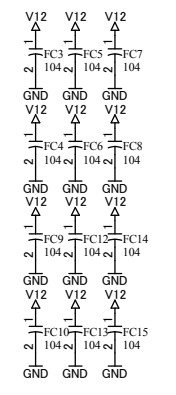
V12 V12
V12A V12A
V33A V33A
V33B V33B
V33C V33C
GND GND



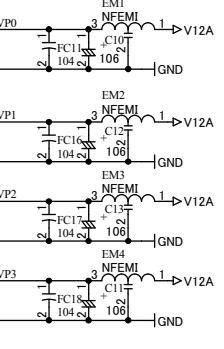
電源回路



FPGA1A A(1)		FPGA1A A(1)	
A12	GND	K10	VCCINT
A15	GND	K11	VCCINT
A2	GND	K12	VCCINT
A25	GND	K13	VCCINT
AB11	GND	K14	VCCINT
AB16	GND	K15	VCCINT
AB19	GND	L11	VCCINT
AB7	GND	L16	VCCINT
AC4	GND	L17	VCCINT
AD19	GND	L18	VCCINT
AD14	GND	M10	VCCINT
AD8	GND	M16	VCCINT
AE1	GND	M17	VCCINT
AE12	GND	N10	VCCINT
AF15	GND	N17	VCCINT
AE2	GND	P10	VCCINT
AF25	GND	R10	VCCINT
B1	GND	R11	VCCINT
B26	GND	R16	VCCINT
C14	GND	T11	VCCINT
C18	GND	T16	VCCINT
D24	GND	U11	VCCINT
D4	GND	U13	VCCINT
E11	GND	U15	VCCINT
E16	GND	V16	VCCINT
E19	GND	V16	VCCINT
E7	GND	V16	VCCINT
H12	GND	H10	VCCINT/IO
H13	GND	H11	VCCINT/IO
H14	GND	H12	VCCINT/IO
H22	GND	H15	VCCINT/IO
H5	GND	H18	VCCINT/IO
K20	GND	H17	VCCINT/IO
L12	GND	H19	VCCINT/IO
L13	GND	J18	VCCINT/IO
L14	GND	J9	VCCINT/IO
L15	GND	K18	VCCINT/IO
L22	GND	K9	VCCINT/IO
L5	GND	L9	VCCINT/IO
M1	GND	M17	VCCINT/IO
M12	GND	R19	VCCINT/IO
M13	GND	R8	VCCINT/IO
M15	GND	T18	VCCINT/IO
M26	GND	T19	VCCINT/IO
N11	GND	T8	VCCINT/IO
N12	GND	T9	VCCINT/IO
N13	GND	U18	VCCINT/IO
N14	GND	U9	VCCINT/IO
N15	GND	V10	VCCINT/IO
N16	GND	V18	VCCINT/IO
N19	GND	V9	VCCINT/IO
N8	GND	W10	VCCINT/IO
P11	GND	W11	VCCINT/IO
P13	GND	W15	VCCINT/IO
P14	GND	W16	VCCINT/IO
P15	GND	W17	VCCINT/IO
P16	GND	G8	B3/VCCA_PLL3
P19	GND	F9	B3/GNDA_PLL3
P8	GND	G3	B2/GND_PLL3
R1	GND	E4	B2/VCCD_PLL3
R12	GND	H7	B2/VCCD_PLL3
R13	GND	G19	B4/VCCA_PLL2
R15	GND	F19	B4/GNDA_PLL2
R21	GND	E21	B5/GND_PLL2
R26	GND	G20	B5/VCCD_PLL2
T12	GND	H20	B5/VCCD_PLL2
T13	GND	T12	B8/VCCA_PLL1
T14	GND	AA8	B8/GNDA_PLL1
T15	GND	Y8	B1/GND_PLL1
U8	GND	W7	B1/VCCD_PLL1
U9	GND	Y7	B1/VCCD_PLL1
W3	GND	W7	B1/VCCD_PLL1
W14	GND	AA19	B7/VCCA_PLL4
W22	GND	Y19	B7/GNDA_PLL4
W5	GND	AA21	B6/GND_PLL4
Y17	GND	W20	B6/VCCD_PLL4
Y8	GND	W20	B6/VCCD_PLL4
J10	GND/IO	V13	GND/IO
J11	GND/IO	V11	GND/IO
J13	GND/IO	U17	GND/IO
J14	GND/IO	U12	GND/IO
J16	GND/IO	U10	GND/IO
J17	GND/IO	T17	GND/IO
K16	GND/IO	V14	GND/IO
K17	GND/IO	V17	GND/IO
L10	GND/IO	W12	GND/IO
L18	GND/IO	W19	GND/IO
N9	GND/IO	W8	GND/IO
P18	GND/IO	R17	GND/IO
P9	GND/IO	H8	GND/IO
T10	GND/IO		



【重要】
EP2C35の場合、これらのピンは、VCCINTに固定されています。
設計データではダミー入力としてください。

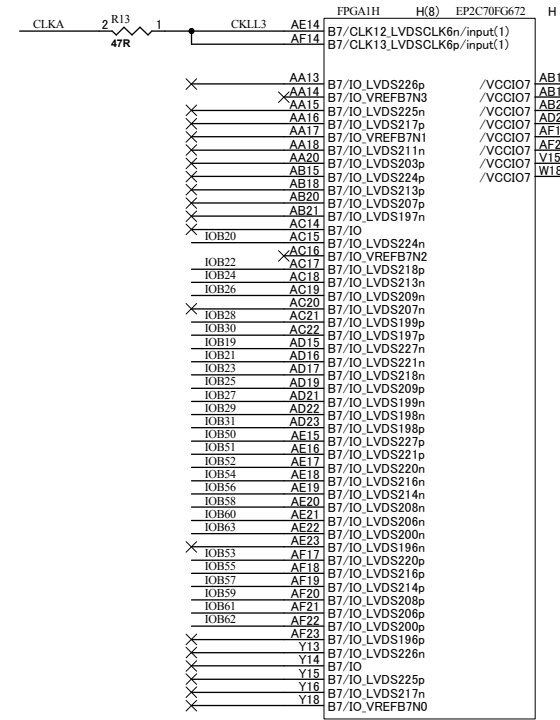
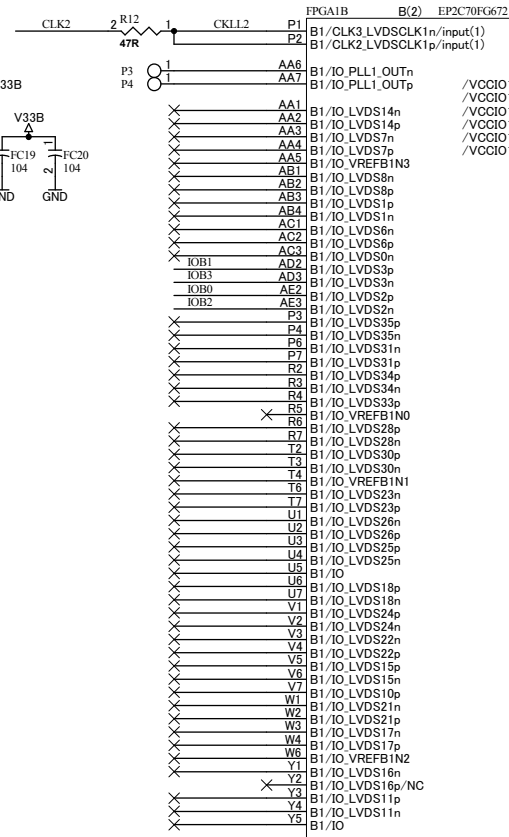
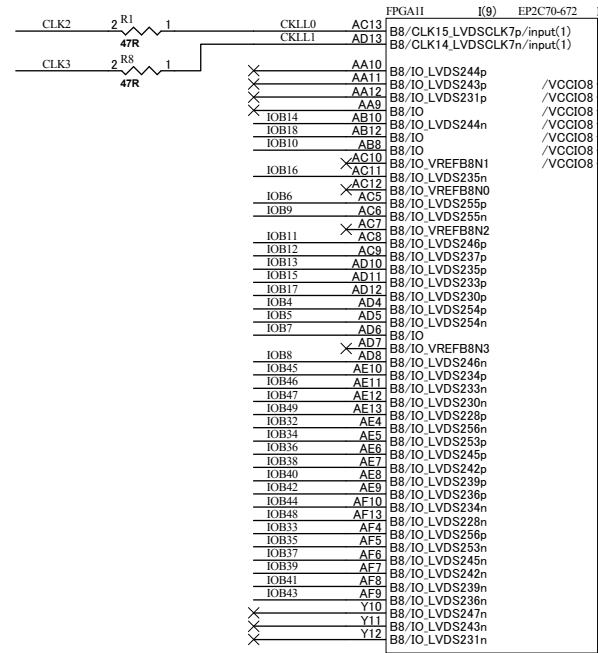
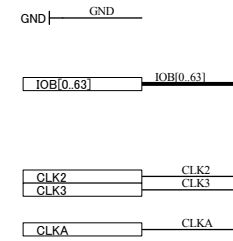


【重要】
EP2C35の場合、これらのピンは、GNDに固定されています。
設計データではダミー入力としてください。

CNA		CNA	
1	GND	2	V33A
3	GND	4	V33A
5	GND	6	V33A
7	GND	8	V33A
9	CLK0	10	CLK1
11	IOA0	12	IOA32
13	IOA1	14	IOA33
15	IOA2	16	IOA34
17	IOA3	18	IOA35
19	IOA4	20	IOA36
21	IOA5	22	IOA37
23	IOA6	24	IOA38
25	IOA7	26	IOA39
27	IOA8	28	IOA40
28	IOA9	30	IOA41
31	IOA10	32	IOA42
33	IOA11	34	IOA43
35	IOA12	36	IOA44
37	IOA13	38	IOA45
39	IOA14	40	IOA46
41	IOA15	42	IOA47
43	IOA16	44	IOA48
45	IOA17	46	IOA49
47	IOA18	48	IOA50
49	IOA19	50	IOA51
51	IOA20	52	IOA52
53	IOA21	54	IOA53
55	IOA22	56	IOA54
57	IOA23	58	IOA55
59	IOA24	60	IOA56
61	IOA25	62	IOA57
63	IOA26	64	IOA58
65	IOA27	66	IOA59
67	IOA28	68	IOA60
69	IOA29	70	IOA61
71	IOA30	72	IOA62
73	IOA31	74	IOA63
75		76	
77		78	
79		80	

CNB		CNB	
1	GND	2	V33B
3	GND	4	V33B
5	GND	6	V33B
7	GND	8	V33B
9	CLK2	10	CLK3
11	IOB0	12	IOB32
13	IOB1	14	IOB33
15	IOB2	16	IOB34
17	IOB3	18	IOB35
19	IOB4	20	IOB36
21	IOB5	22	IOB37
23	IOB6	24	IOB38
25	IOB7	26	IOB39
27	IOB8	28	IOB40
29	IOB9	30	IOB41
31	IOB10	32	IOB42
33	IOB11	34	IOB43
35	IOB12	36	IOB44
37	IOB13	38	IOB45
39	IOB14	40	IOB46
41	IOB15	42	IOB47
43	IOB16	44	IOB48
45	IOB17	46	IOB49
47	IOB18	48	IOB50
49	IOB19	50	IOB51
51	IOB20	52	IOB52
53	IOB21	54	IOB53
55	IOB22	56	IOB54
57	IOB23	58	IOB55
59	IOB24	60	IOB56
61	IOB25	62	IOB57
63	IOB26	64	IOB58
65	IOB27	66	IOB59
67	IOB28	68	IOB60
69	IOB29	70	IOB61
71	IOB30	72	IOB62
73		74	
75		76	
77		78	
79		80	

V12 V12A
 V12A V33A
 V33A V33B
 V33B



V12 V12A
V12A V33A
V33A V33B
V33B

