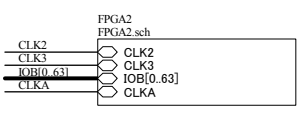
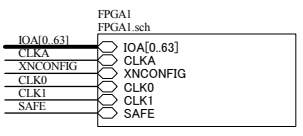
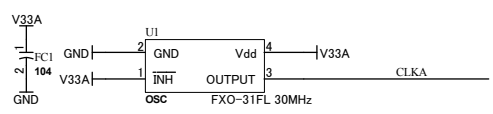
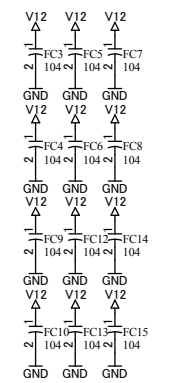
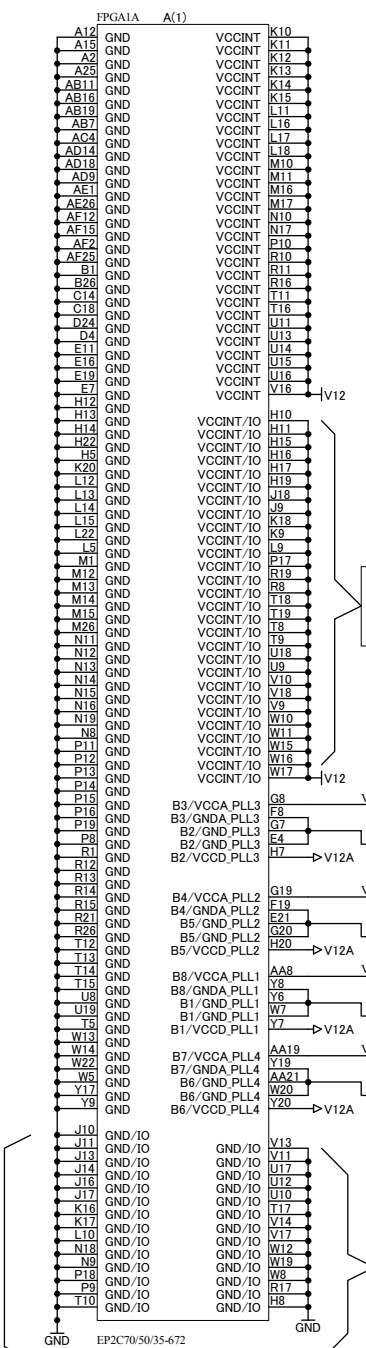
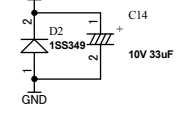
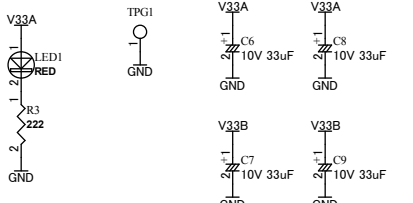
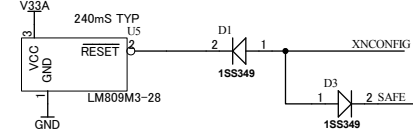
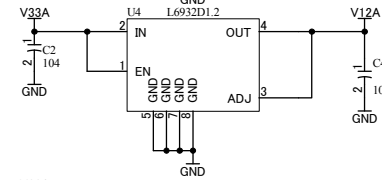
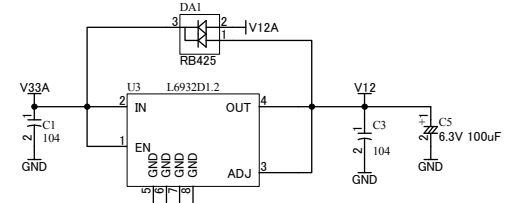


V12 V12
V12A V12A
V33A V33A
V33B V33B
V33C V33C
GND GND

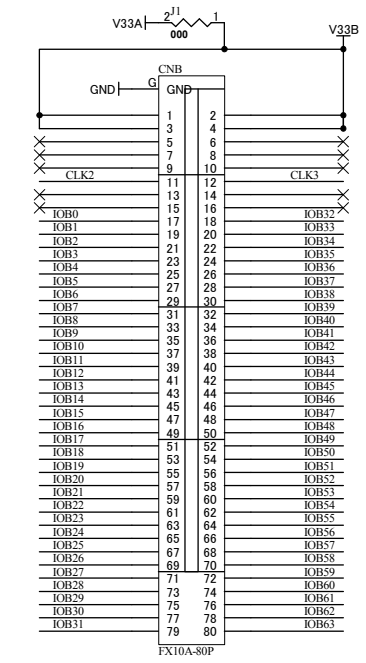
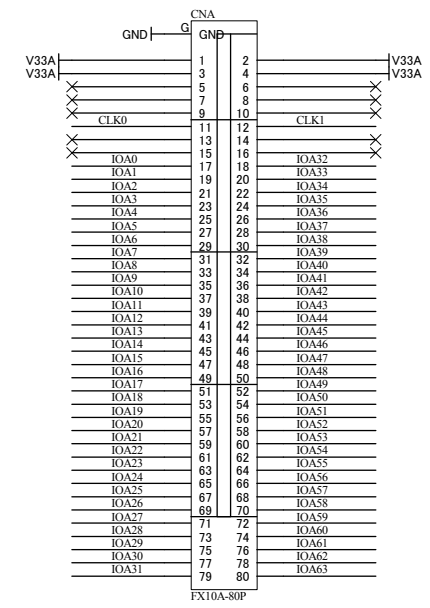


電源回路

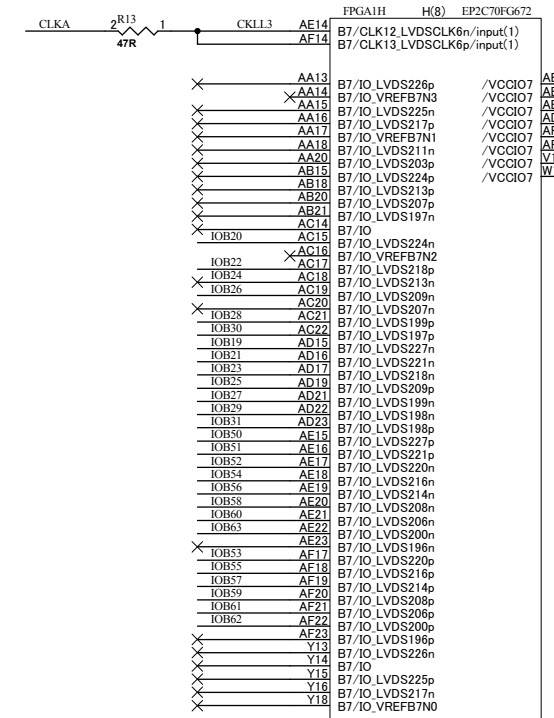
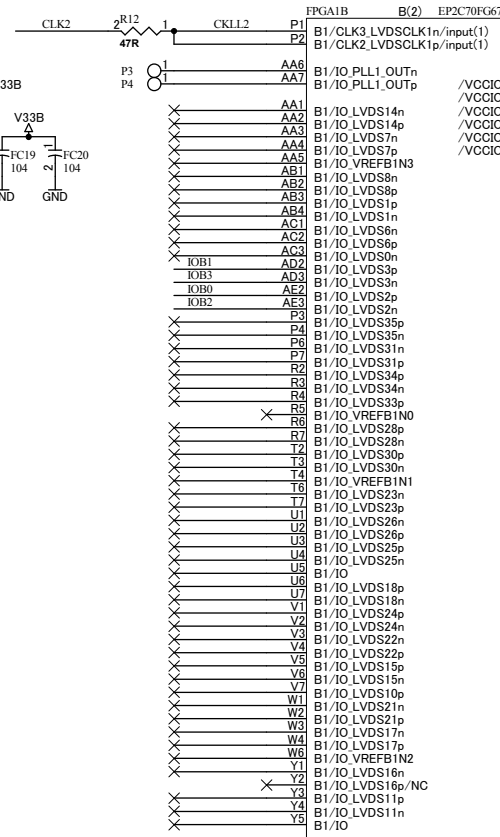
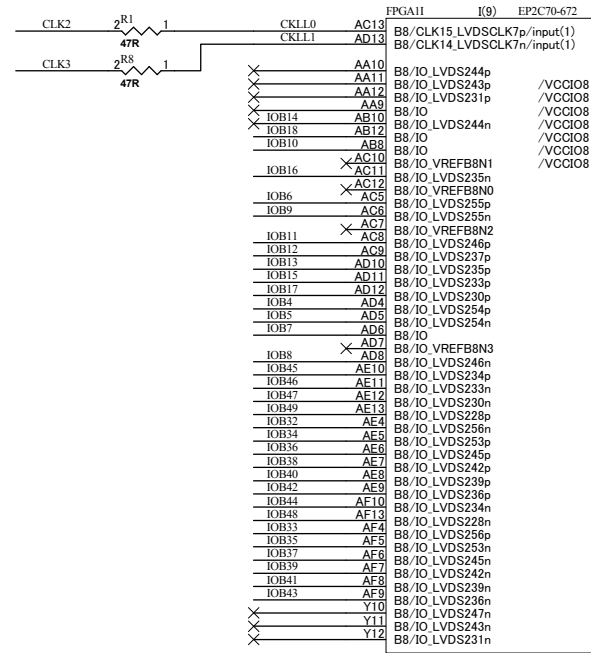
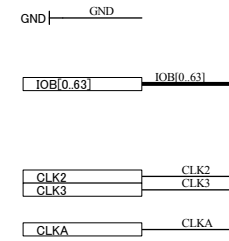


【重要】
EP2C35の場合、これらのピンは、VCCINTに固定されています。
設計データではダミー入力としてください。

【重要】
EP2C35の場合、これらのピンは、GNDに固定されています。
設計データではダミー入力としてください。



V12 V12
V12A V12A
V33A V33A
V33B V33B



V12 V12A
 V12A V12A
 V33A V33A
 V33B V33B

