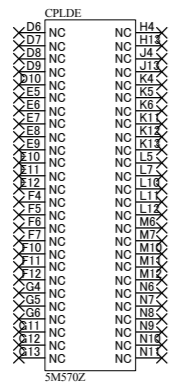
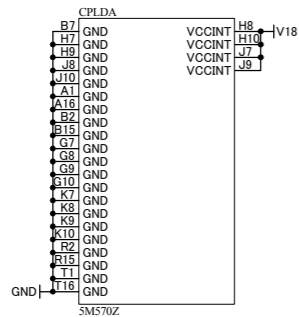
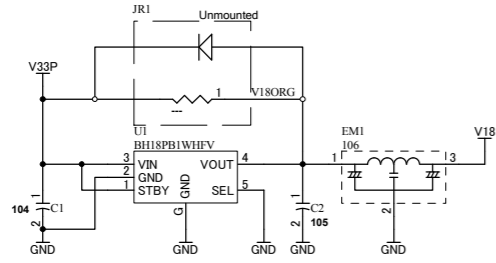


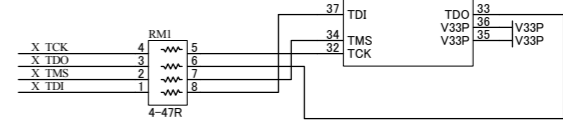
V33P	V33P
VIOA	VIOA
VIOB	VIOB
V18	V18
GND	GND



CPLDC	
IOB0	H5 IO CLK0 /1
IOB1	J5 IO CLK1 /1
IOB2	C3 IO DIFFIO L1p/1
IOB3	C3 IO DIFFIO L1n/1
IOB4	C3 IO DIFFIO L2p/1
IOB5	D1 IO DIFFIO L2n/1
IOB6	D2 IO DIFFIO L3p/1
IOB7	E1 IO DIFFIO L3n/1
	X E2 IO DIFFIO L4p/1
	X E2 IO DIFFIO L4n/1
IOB9	F1 IO DIFFIO L5p/1
IOB8	E2 IO DIFFIO L5n/1
	X G2 IO DIFFIO L6p/1
	X G2 IO DIFFIO L6n/1
IOB11	G1 IO DIFFIO L8n/1
IOB10	G3 IO DIFFIO L7n/1
IOB12	H2 IO DIFFIO L8p/1
IOB13	H1 IO DIFFIO L8n/1
	X J3 IO DIFFIO L9n/1
IOB14	J2 IO DIFFIO L10p/1
IOB15	L3 IO DIFFIO L10n/1
	X L4 IO DIFFIO L11p/1
	X M2 IO DIFFIO L11n/1
IOB17	M2 IO DIFFIO L12p/1
IOB16	L1 IO DIFFIO L12n/1
	X M3 IO DIFFIO L13p/1
	X M4 IO DIFFIO L13n/1
	X M4 IO DIFFIO L14p/1
	X M2 IO DIFFIO L14n/1
IOB19	N2 IO DIFFIO L15p/1
IOB18	N1 IO DIFFIO L15n/1
	X N3 IO DIFFIO L16p/1
	X P2 IO DIFFIO L16n/1
IOB20	P3 IO DIFFIO B1p/1
IOB21	R1 IO DIFFIO B1n/1
	X P4 IO DIFFIO B2p/1
	X P4 IO DIFFIO B2n/1
IOB22	T4 IO DIFFIO B3p/1
IOB23	T4 IO DIFFIO B3n/1
	X N5 IO DIFFIO B4p/1
	X P5 IO DIFFIO B4n/1
	X R6 IO DIFFIO B5p/1
	X R6 IO DIFFIO B5n/1
	X R5 IO DIFFIO B6p/1
	X T6 IO DIFFIO B6n/1
	X R7 IO DIFFIO B7p/1
	X P7 IO DIFFIO B7n/1
	X T7 IO DIFFIO B8p/1
	X R8 IO DIFFIO B8n/1
	X P9 IO DIFFIO B9p/1
	X T9 IO DIFFIO B9n/1
	X T8 IO DIFFIO B10p/1
	X P9 IO DIFFIO B10n/1
	X T9 IO DIFFIO B11p/1
	X P10 IO DIFFIO B11n/1
	X T10 IO DIFFIO B12p/1
	X P10 IO DIFFIO B12n/1
IOB24	M8 IO DEV_OE_DIFFIO_B13p/1
	X M9 IO DEV_GL_Rn_DIFFIO_B13n/1
	X P11 IO DIFFIO B14p/1
	X P12 IO DIFFIO B14n/1
	X P12 IO DIFFIO B15p/1
	X P12 IO DIFFIO B15n/1
	X P11 IO DIFFIO B16p/1
	X P12 IO DIFFIO B16n/1
	X P12 IO DIFFIO B17p/1
	X P13 IO DIFFIO B17n/1
	X P12 IO DIFFIO B18p/1
	X P13 IO DIFFIO B18n/1
	X P14 IO DIFFIO B19p/1
	X P14 IO DIFFIO B19n/1
	X P14 IO DIFFIO B20p/1
	X P16 IO DIFFIO B20n/1
	X E3 IO /1
	X J1 IO /1
	X K3 IO /1
	X K2 IO /1
	X L1 IO /1
	C1 VCCIO1
	J6 VCCIO1
	P1 VCCIO1
	F3 VCCIO1
	L8 VCCIO1
	L9 VCCIO1
	L14 VCCIO1
VIOB	T14 VCCIO1

CPLDD	
IOA0	J12 IO CLK2 /2
IOA1	H12 IO CLK3 /2
	X B1 IO DIFFIO T1p/2
	X B3 IO DIFFIO T1n/2
	X B4 IO DIFFIO T2p/2
	X B4 IO DIFFIO T2n/2
	X A4 IO DIFFIO T3p/2
	X C4 IO DIFFIO T3n/2
	X B5 IO DIFFIO T4p/2
	X B6 IO DIFFIO T4n/2
	X D5 IO DIFFIO T5p/2
	X C5 IO DIFFIO T5n/2
	X A6 IO DIFFIO T6p/2
	X B5 IO DIFFIO T6n/2
	X C6 IO DIFFIO T7p/2
	X C6 IO DIFFIO T7n/2
	X C6 IO DIFFIO T8p/2
	X B7 IO DIFFIO T8n/2
	X A8 IO DIFFIO T9p/2
	X B7 IO DIFFIO T9n/2
	X A9 IO DIFFIO T10p/2
	X B8 IO DIFFIO T10n/2
	X A10 IO DIFFIO T11p/2
	X B9 IO DIFFIO T11n/2
	X C9 IO DIFFIO T12p/2
	X B10 IO DIFFIO T12n/2
IOA2	C11 IO DIFFIO T13p/2
IOA3	A11 IO DIFFIO T13n/2
	X B11 IO DIFFIO T14p/2
	X C11 IO DIFFIO T14n/2
	X A12 IO DIFFIO T15p/2
	X B12 IO DIFFIO T15n/2
IOA8	B17 IO DIFFIO T16p/2
IOA9	C12 IO DIFFIO T16n/2
IOA5	A13 IO DIFFIO T17p/2
IOA4	B13 IO DIFFIO T17n/2
	X A15 IO DIFFIO T17n/2
IOA7	X C13 IO DIFFIO T18p/2
IOA6	B14 IO DIFFIO T18n/2
	X B14 IO DIFFIO T19p/2
	X P15 IO DIFFIO T19n/2
	X C14 IO DIFFIO T19n/2
	X C14 IO DIFFIO R1p/2
	X C14 IO DIFFIO R1n/2
	X C14 IO DIFFIO R2p/2
	X C15 IO DIFFIO R2n/2
	X P15 IO DIFFIO R2n/2
	X P15 IO DIFFIO R3p/2
	X P15 IO DIFFIO R3n/2
	X P16 IO DIFFIO R4p/2
	X P16 IO DIFFIO R4n/2
	X P16 IO DIFFIO R5p/2
	X P16 IO DIFFIO R5n/2
	X P16 IO DIFFIO R6p/2
	X P16 IO DIFFIO R6n/2
	X P16 IO DIFFIO R7p/2
	X P16 IO DIFFIO R7n/2
	X P16 IO DIFFIO R8p/2
	X P16 IO DIFFIO R8n/2
IOA11	X P14 IO DIFFIO R8n/2
IOA10	G14 IO DIFFIO R9p/2
	X P16 IO DIFFIO R9n/2
	X P16 IO DIFFIO R10p/2
	X P14 IO DIFFIO R10n/2
	X P14 IO DIFFIO R11p/2
	X P14 IO DIFFIO R11n/2
IOA12	X P15 IO DIFFIO R12p/2
IOA13	K14 IO DIFFIO R12n/2
	X P16 IO DIFFIO R13p/2
IOA14	L13 IO DIFFIO R13n/2
IOA15	X P15 IO DIFFIO R14p/2
IOA16	L19 IO DIFFIO R14n/2
IOA17	M19 IO DIFFIO R15p/2
	X P15 IO DIFFIO R15n/2
IOA24	X M13 IO DIFFIO R16p/2
	X M13 IO DIFFIO R16n/2
	X M13 IO DIFFIO R17p/2
	X M13 IO DIFFIO R17n/2
IOA22	X M15 IO DIFFIO R18p/2
IOA23	N13 IO DIFFIO R18n/2
IOA18	P16 IO DIFFIO R19p/2
IOA19	P15 IO DIFFIO R19n/2
IOA20	N15 IO DIFFIO R20p/2
IOA21	P14 IO DIFFIO R20n/2
	X P11 IO /2
	P16 VCCIO2
	J11 VCCIO2
	H11 VCCIO2
	F11 VCCIO2
	B16 VCCIO2
	A14 VCCIO2
	F9 VCCIO2
	F9 VCCIO2
	A2 VCCIO2

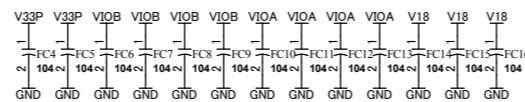
PLCC68PIN			
IOB0	1	IOA0	68
IOB1	2	IOA1/CLK	67
IOB2	3	IOA2	66
IOB3	4	IOA3	65
IOB4	5	IOA4	64
IOB5	6	IOA5	63
IOB6	7	IOA6	62
IOB7	8	VIOA	61
	9	GND	60
	10	GND	59
	11	GND	58
	12	VIOB	57
IOB8	13	IOA8	56
IOB9	14	IOA9	55
IOB10	15	IOA10	54
IOB11	16	IOA11	53
IOB12	17	IOA12	52
IOB13	18	IOA13	51
IOB14	19	IOA14	50
IOB15	20	IOA15	49
IOB16	21	IOA16	48
IOB17	22	IOA17	47
IOB18	23	IOA18	46
IOB19	24	IOA19	45
IOB20	25	VIOA	44
IOB21	26	GND	43
	27	GND	42
	28	GND	41
IOB22	29	VIOB	40
IOB23	30	IOA22	39
IOB24	31	IOA23	38
	32	IOA24	37
	33	TDO	36
	34	V33P	35
	35	V33P	34
	36	TMS	33
	37	TCK	32



CPLDB	
N4	X TMS
L6	X TDI
P3	X TCK
M5	X TDO

BANK B

BANK A



HuMANDATA LTD.
OSAKA JAPAN
www.hdl.co.jp/en/(Global)
www.hdl.co.jp/(Japan)

MAX V PLCC68 MODULE

DOC. No. AP68-02

A1

Date: 7-Jun-2011

11:12:45

File: AP6802A.sch

Sheet 1 of 1