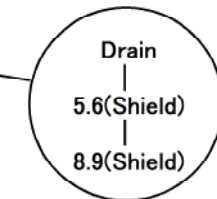


NOTE:

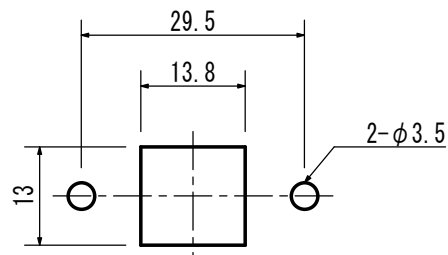
1. Cable: USB3.0 (28AWG\*1P+D+AL+MYLAR)\*2C+28AWG\*1P+28AWG\*2C  
OD: 5.5 ± 0.2mm Black Color PVC Jacket;
2. Connector: USB3.0 B Plug\*1PC(Insulator Pantone 300C);
3. Connector: USB3.0 B FEMALE\*1PC(Insulator Pantone 300C);
4. Molding: PVC 50P, BLACK;
5. MOLD P/N: A-049;
6. MOLD P/N: DA-072;
7. PACKING: 1 PIECE+PE BAG;

WIRING STRUCTURE :

P1	SIGNAL NAME	AWG	COLOR	P1
1	VCC	28	RED	1
2	D-	28	WHITE	2
3	D+	28	GREEN	3
4	GND	28	BLACK	4
5	SDP1-	28	BLUE	5
6	SDP1+	28	YELLOW	6
7	DRAIN	28		7
8	SDP2-	28	PURPLE	8
9	SDP2+	28	ORANGE	9
SHELL	Outer Braid			SHELL



パネルカット寸法例



<b>HUMANDATA</b>		UNIT	TITLE	
CHK	DWG	mm	P113-500 Outline Drawing	
		SCALE	DWG NO	REV
		1/1	P113-500-DWG-B	B