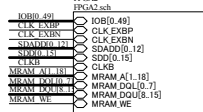
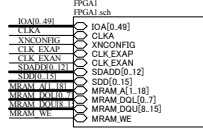
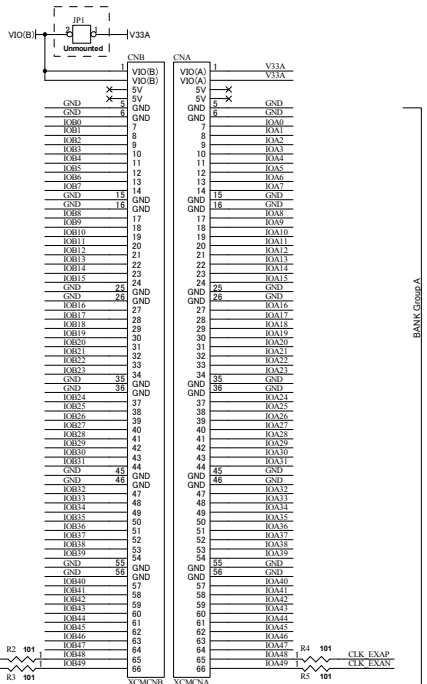
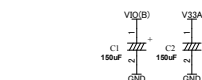


These pins are connected to VCCINT. You need to set them as INPUT.

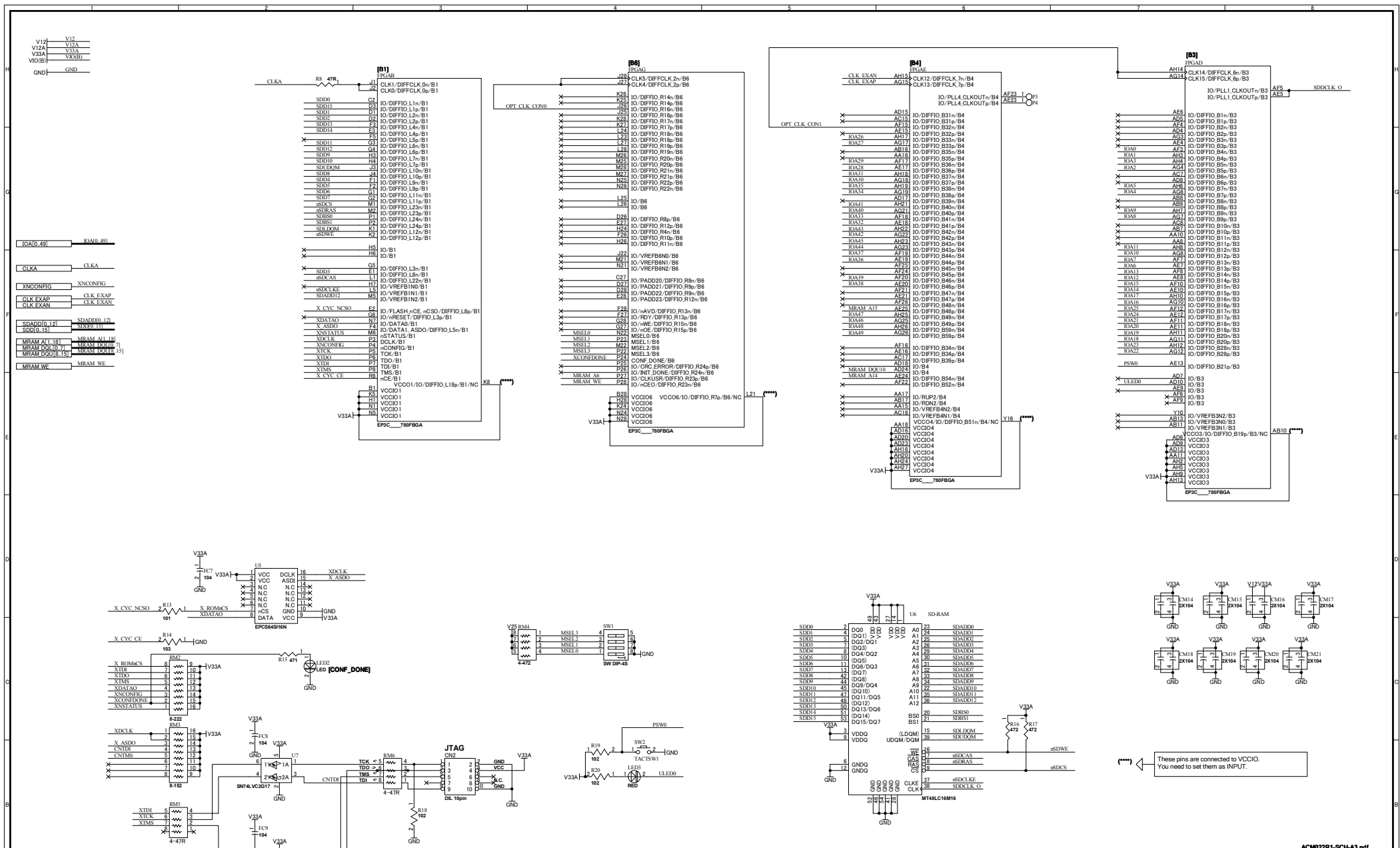
These pins are connected to GND. You need to set them as INPUT.



**HUMAN DATA**

HuMANDATA LTD.  
OSAKA JAPAN  
www.hdl.co.jp/en/(Global)  
www.hdl.co.jp/(Japan)

Altera CycloneIII F780 FPGA board



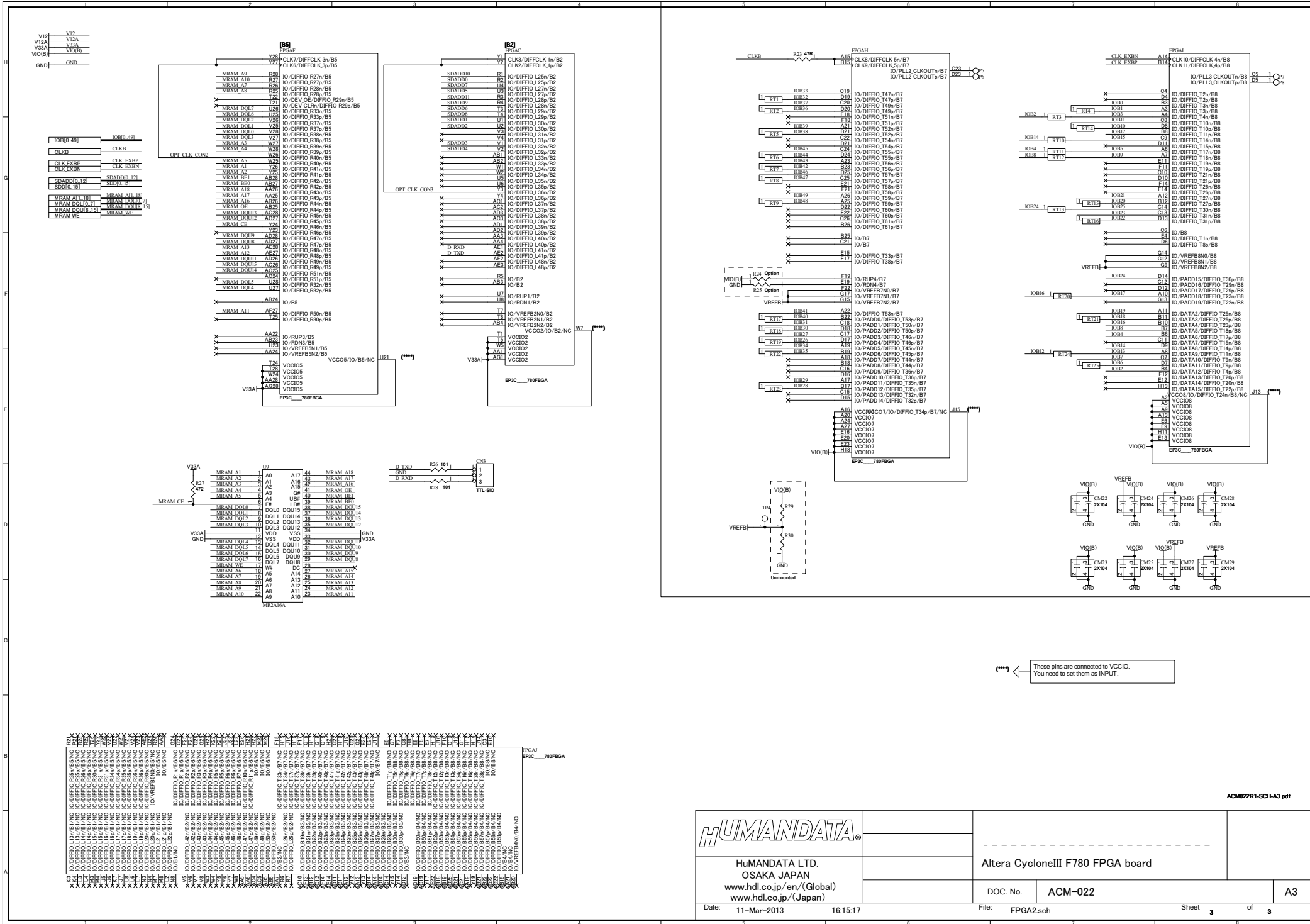
(\*\*\*) These pins are connected to VCCIO. You need to set them as INPUT.

**HUMAN DATA**  
HuMANDATA LTD.  
OSAKA JAPAN  
www.hdl.co.jp/en/(Global)  
www.hdl.co.jp/(Japan)

Altera CycloneIII F780 FPGA board

DOC. No. ACM-022

Date: 11-Mar-2013 16:15:16 File: FPGA1.sch Sheet 2 of 3



**HUMAN DATA**

HuMANDATA LTD.  
 OSAKA JAPAN  
 www.hdl.co.jp/en/(Global)  
 www.hdl.co.jp/(Japan)

Altera CycloneIII F780 FPGA board