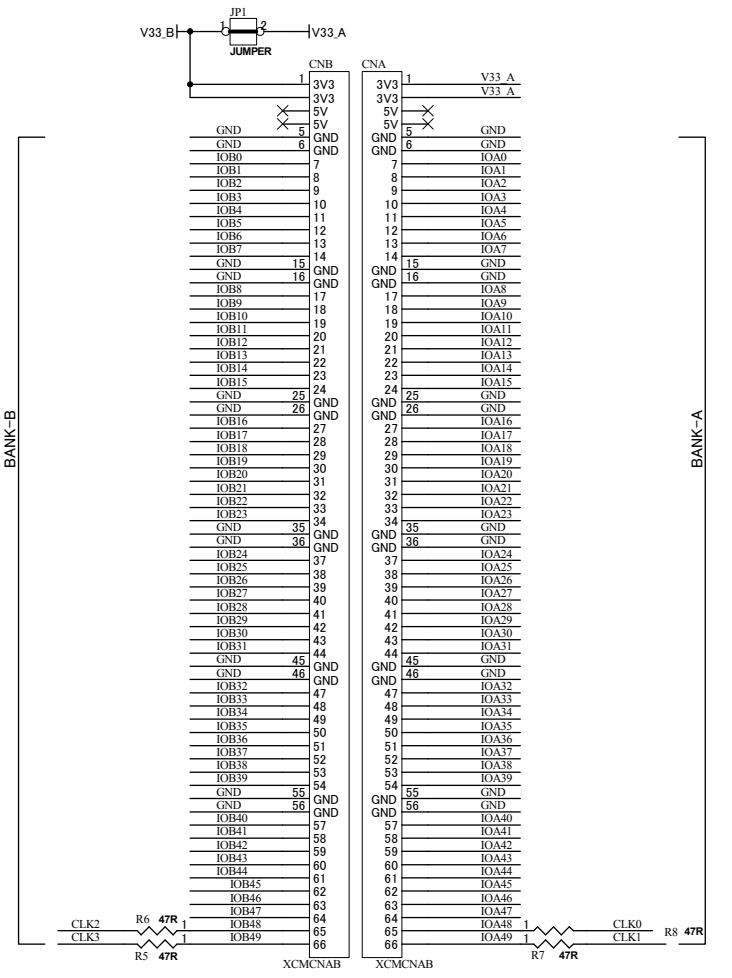
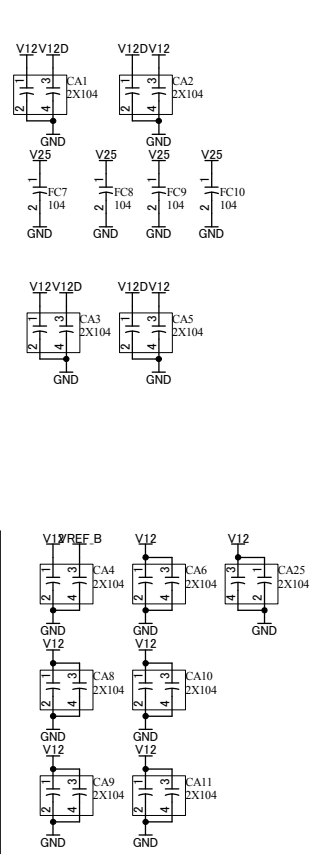
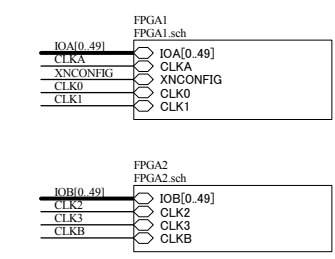
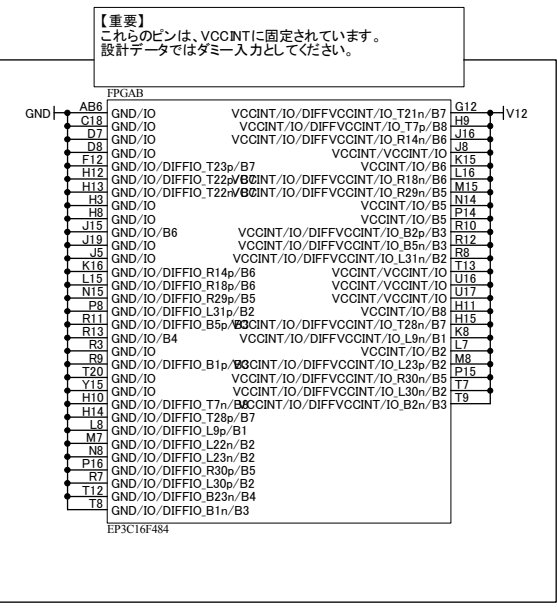
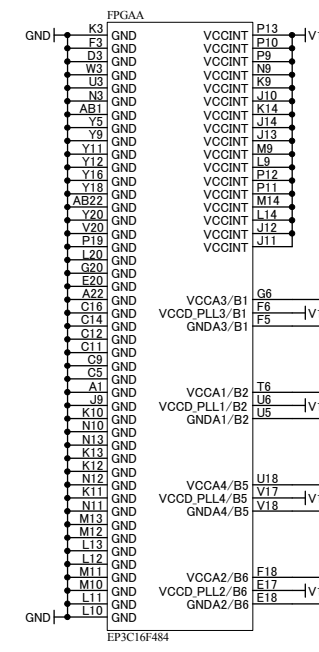
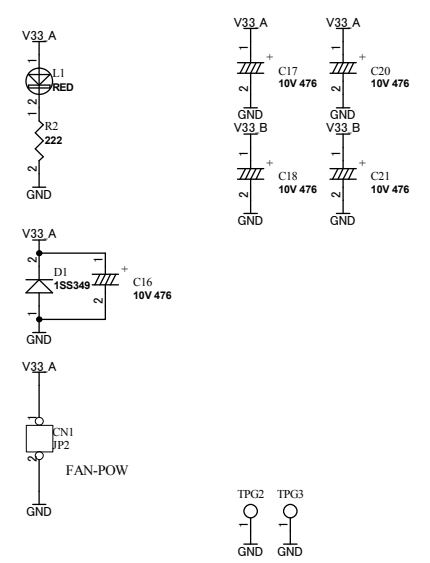
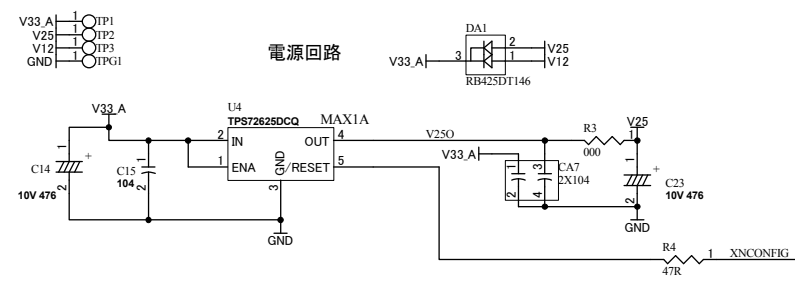
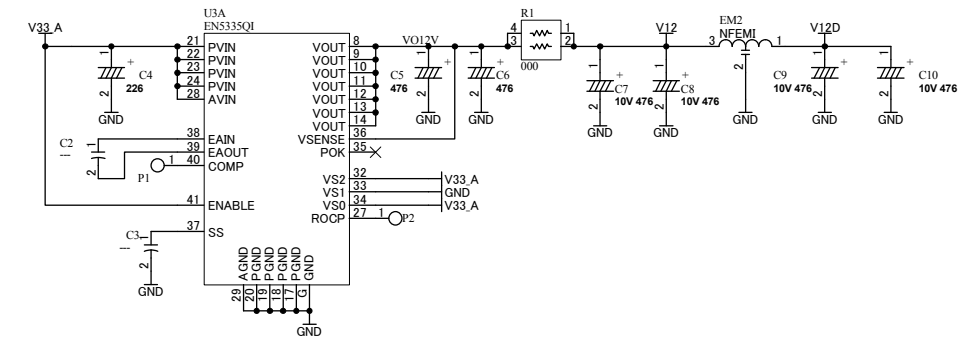
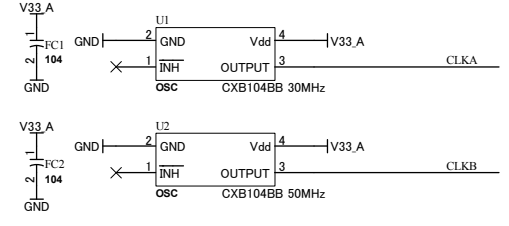


V12 V25
V33 A V33 A
V33 B V33 B
V33C V33C
GND GND

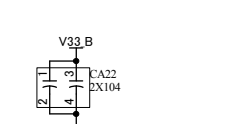
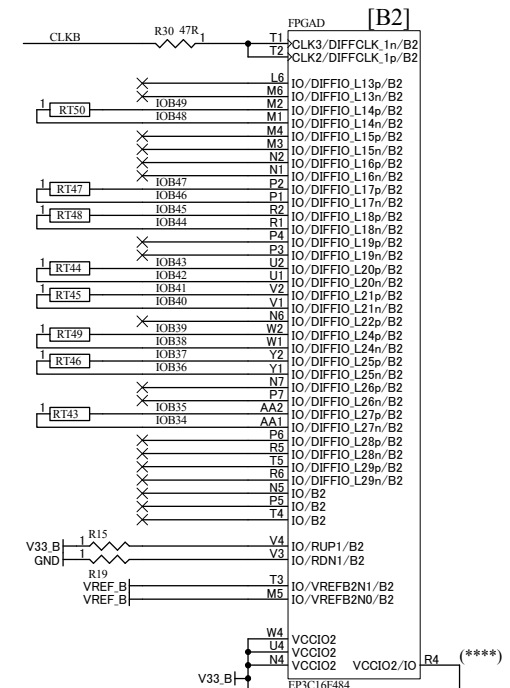
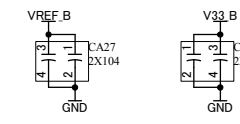
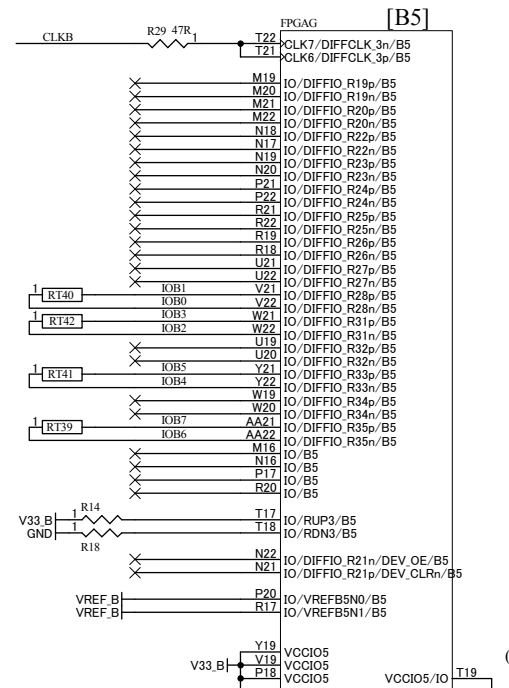
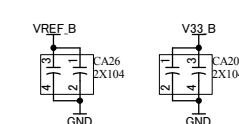
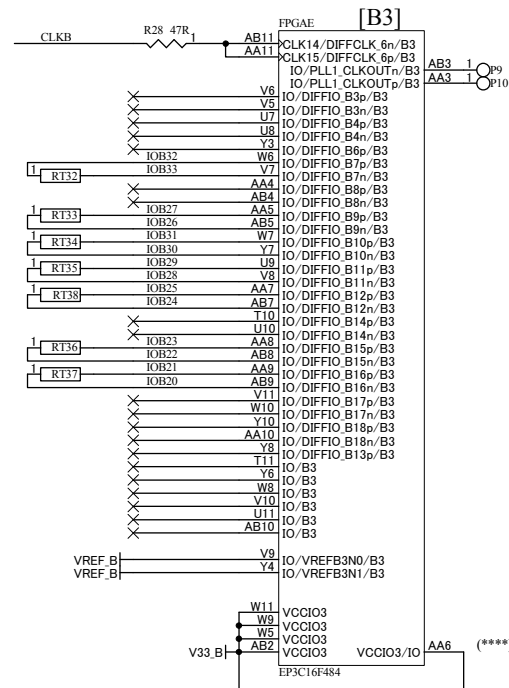
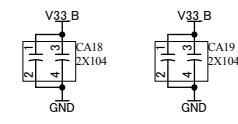
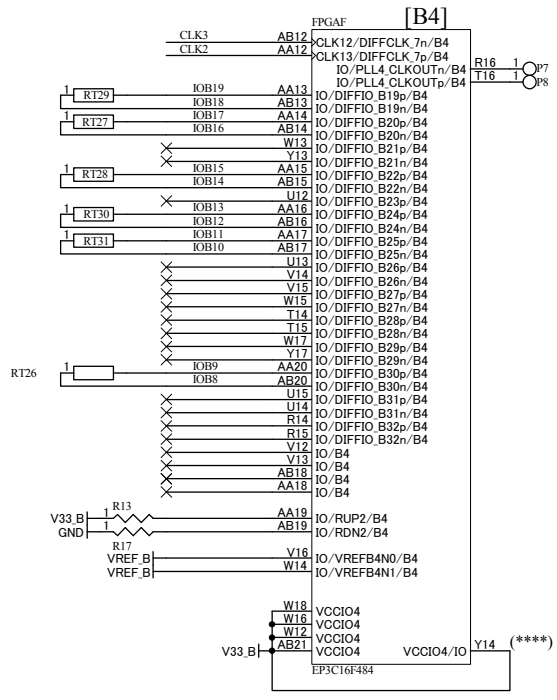


V12 V12
 V12A V12A
 V33 A V33 A
 V33 B V33 B

GND GND

IOB[0..49] IOB[0..49]
 CLKB CLKB

CLK2 CLK2
 CLK3 CLK3



[B2]

【重要】
 このピンは、VCCIOに固定されています。
 設計データではダミー入力としてください。