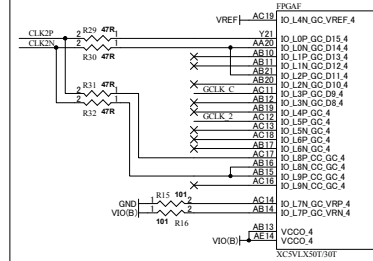
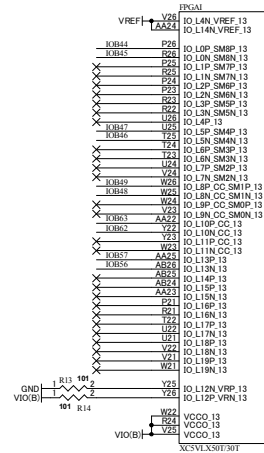
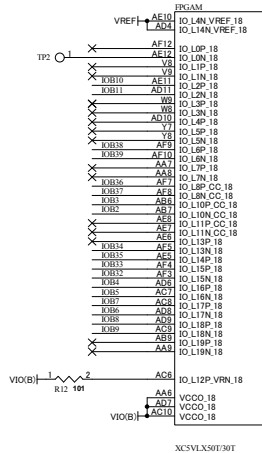
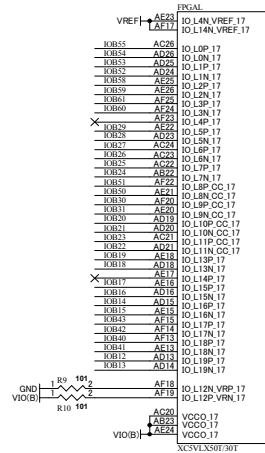


	2010/07/08	Virtex5 LX30T/50T FPGA Board	
	HuMANDATA LTD. OSAKA JAPAN www.hdl.co.jp/en/(Global) www.hdl.co.jp/(Japan)	DOC. No.	XCM-107
Date: 8-Jul-2010	18:22:43	File: XCM107E.sch	Sheet 1 of 4

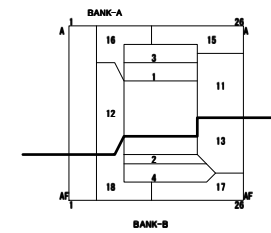
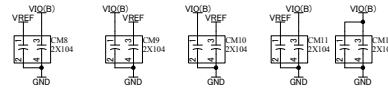
XCM107R2-SCH-E1.pdf

V10 V10
 V12 V12
 V25 V25
 V33.A V33.A
 VIO(B) VREF
 GND GND
 VREF VREF

IOB12_63 IOB12_63
 CLKP CLKP
 CLKN CLKN
 CLK_2 CLK_2
 GCLK_C GCLK_C



BANK-B

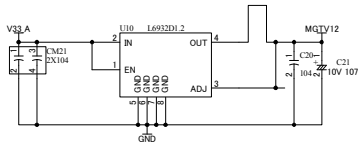
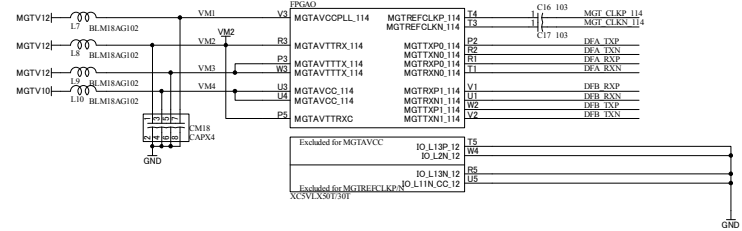
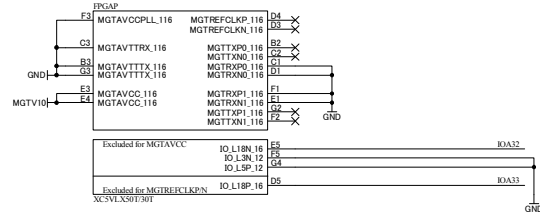
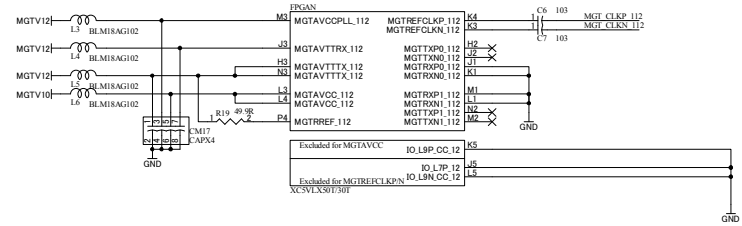
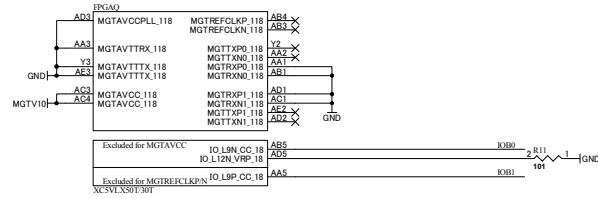


XCM107R2-SCH-E1.pdf

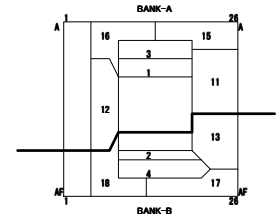
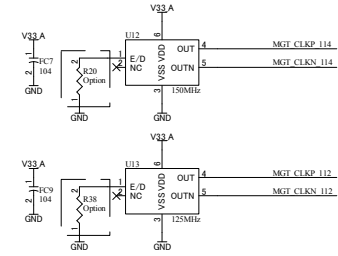
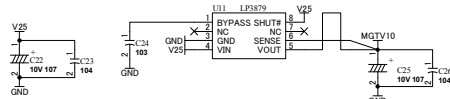
	2010/07/08	Virtex5 LX30T/50T FPGA Board		E1
	HuMANDATA LTD. OSAKA JAPAN www.hdl.co.jp/en/(Global) www.hdl.co.jp/(Japan)			
Date: 8-Jul-2010	18:22:45	File: X5IOB.sch	Sheet 3	of 4

V10 | V10
 V12 | V12
 V25 | V25
 V33A | V33A
 V10(B) | V10(B)
 GND | GND
 VREF | VREF

DFA_RXP | DFA_RXP
 DFA_RNN | DFA_RNN
 DFA_TXP | DFA_TXP
 DFA_TNN | DFA_TNN
 DFB_RXP | DFB_RXP
 DFB_RNN | DFB_RNN
 DFB_TXP | DFB_TXP
 DFB_TNN | DFB_TNN
 ROBO | ROBO
 ROBI | ROBI
 ROAS2 | ROAS2
 ROAS3 | ROAS3



P9 | MGTV10
 P10 | MGTV12



XCM107R2-SCH-E1.pdf

	2010/07/08	Virtex5 LX30T/50T FPGA Board		DOC. No. XCM-107	E1
	HuMANDATA LTD. OSAKA JAPAN www.hdl.co.jp/en/(Global) www.hdl.co.jp/(Japan)				